

Quick-Fitting Joint Made of Stainless Steel (Order Production) Tube Fitting Stainless SUS304 Series

Features

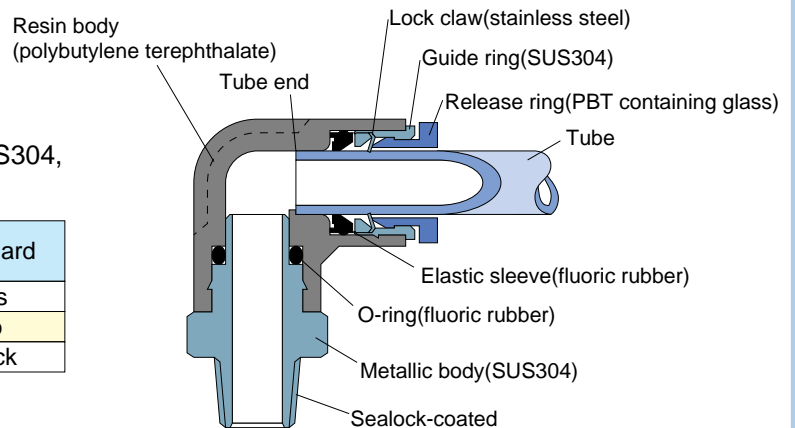
- This tube fitting serves best where strength is required or the atmosphere contains chemicals. (It can be used with chemicals depending on service conditions.)
- The stainless steel used is SUS304 and the sealing material is fluoroc rubber.

Construction

⚠ Caution

- How to distinguish SUS303 equivalent, SUS304, and standard fittings.

	SUS304	SUS303 equivalent	standard
Guide ring V groove	yes	no	yes
Thread hexagon flat groove	yes	no	no
Release ring color	dark blue	dark blue	black



Specifications

Fluid admitted	Air, Vacuum, Chemical(conditional)
Service pressure range	0~150 psi (0~0.9MPa)
Working vacuum	-29.5 in.Hg (-100kPa)
Service temperature range	32~140°F (0~60°C)

⚠ Warning

Be sure to contact PISCO for guidance when chemicals are admitted.

Model Designation(Example)

Model Designation: **PC** (1) **6** (2) **01** (3) **SUS** (4)

(1) Type
(2) Tube dia.

Tube dia.	mm size					
Code	4	6	8	10	12	16
Size	φ4	φ6	φ8	φ10	φ12	φ16

(3) Thread size

Thread size	Metric thread		Taper pipe thread			
Code	M5	M6	01	02	03	04
Size	M5×0.8	M6×1	R1/8	R1/4	R3/8	R1/2

(4) Specification
SUS : SUS 304 specification
*Be sure to specify "SUS"; otherwise, the standard type will be delivered.

⚠ Detailed Safety Instructions

Before using the PISCO device, be sure to read the "Safety Instructions", "Common Safety Instructions for Products Listed in this Manual" on page 23~24 and "Common Safety Instructions for Quick-Fitting Joint" on pages 29~31.

⚠ Warning

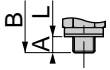
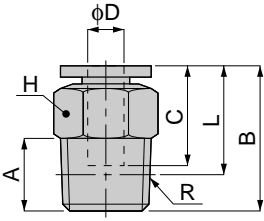
1. When the fluid admitted is a chemical, be sure to contact PISCO for guidance. Depending on usage, damage may be caused to the joint body, the tube may come off or leakage may result.

Tube Fitting Series SUS304 Type

unit:mm

PC
SUS304

Straight



Metric thread type

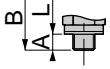
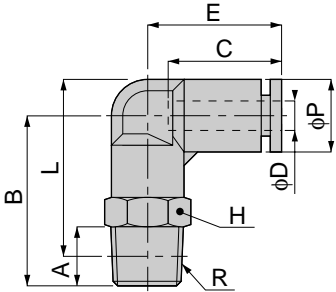


Model	Tube dia. ϕD	R	A	B	L	C	H	Mass (g)	Orifice (ϕ mm)	Eff. a. (mm^2)		
PC 4-M5SUS	4	M5×0.8	3	20	17	15	10	6.5	1.8	1.9		
PC 4-M6SUS		M6×1	4	21.5			10		3	6.2		
PC 4-01SUS		R1/8	8	21	14		8.5	3	5.3			
PC 4-02SUS		R1/4	11	15								
PC 6-M5SUS	6	M5×0.8	3	22	19	17	12	9.5	1.8	1.9		
PC 6-M6SUS		M6×1	4	23			12		3	6.2		
PC 6-01SUS		R1/8	8	22.5	18.5		9	4.6	12.5			
PC 6-02SUS		R1/4	11	24.5						14	17	
PC 6-03SUS	R3/8	12	23.5	17	17	27						
PC 8-01SUS	8	R1/8	8	28	24	18	14	15	6	20		
PC 8-02SUS		R1/4	11	26.5	20.5				7			
PC 8-03SUS		R3/8	12	24	17.5				17		23	
PC 10-01SUS	10	R1/8	8	30.5	26.5	20	17	22.5	6	22.9		
PC 10-02SUS		R1/4	11	30	24			20				
PC 10-03SUS		R3/8	12	29.5	23		26	8.5	35			
PC 10-04SUS		R1/2	15	30.5	22.5						21	49
PC 12-02SUS	12	R1/4	11	36	30	23.5	21	43	8.5	35		
PC 12-03SUS		R3/8	12	32	25.5			35.5			11	59
PC 12-04SUS		R1/2	15	34	26			49.5				
PC 16-03SUS	16	R3/8	12	39.5	33	24.5	24	59.5	11	83.3		
PC 16-04SUS		R1/2	15	41.5	33.5			67			13	114

unit:mm

PL
SUS304

Elbow



Metric thread type



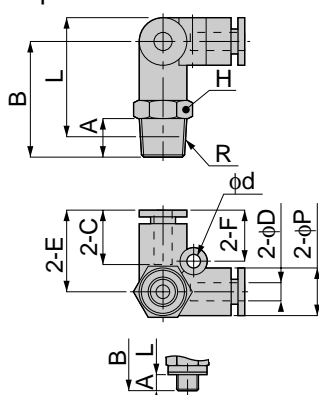
Model	Tube dia. ϕD	R	A	B	L	ϕP	C	E	H	Mass (g)	Orifice (ϕ mm)	Eff. a. (mm^2)		
PL 4-M5SUS	4	M5×0.8	3	21.5	24.5	10	15	17	10	9	1.8	1.5		
PL 4-M6SUS		M6×1	4	22.5	24.5					9.5				
PL 4-01SUS		R1/8	8	23.5	24.5			18.5	12	3	4.2			
PL 4-02SUS		R1/4	11	26.5	25.5								14	21
PL 6-M5SUS	6	M5×0.8	3	22	25.5	12.5	17	19.5	12	12	1.8	1.5		
PL 6-M6SUS		M6×1	4	23						12			3	6.1
PL 6-01SUS		R1/8	8	25	27			20	14	22	4.6		10	
PL 6-02SUS		R1/4	11	28	28									17
PL 6-03SUS	R3/8	12	30	29.5										
PL 8-01SUS	8	R1/8	8	28	31	14.5	18	23	14	18	6	16.5		
PL 8-02SUS		R1/4	11	31	32					24				
PL 8-03SUS		R3/8	12	33	33.5					17			37	
PL 10-01SUS	10	R1/8	8	36	38.5	17.5	20	26.5	17	31	6	22.4		
PL 10-02SUS		R1/4	11	37	39					34				
PL 10-03SUS		R3/8	12	40	40.5				42	8	30			
PL 10-04SUS		R1/2	15	37.5									21	64
PL 12-02SUS	12	R1/4	11	39	43	21	23.5	29.5	21	50.5	8	30		
PL 12-03SUS		R3/8	12	41.5	44.5					51.5			10	47
PL 12-04SUS		R1/2	15	33	39.5					66				
PL 16-03SUS	16	R3/8	12	47	53	25	24.5	33.5	22	81.5	13	80.2		
PL 16-04SUS		R1/2	15	51	55.5					85.5			93.3	

Tube Fitting Series SUS304 Type

unit:mm

PVX
SUS304

Tripod Elbow



Metric thread type

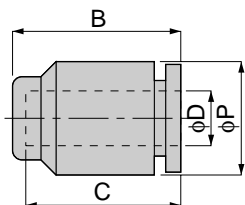


Model	Tube dia. ϕD	R	A	B	L	ϕP	C	E	H	ϕd	F	Mass (g)	Orifice (ϕ mm)	Eff. a. (mm^2)
PVX 4-M5SUS	4	M5×0.8	3	21.5	24.5	10	15	17	10	3.2	10.5	11.5	1.8	2.3
PVX 4-M6SUS		M6×1	4	22.5								12		3.6
PVX 4-01SUS		R1/8	8	24.5	25.5				14.5			3	4	
PVX 4-02SUS		R1/4	11	27.5	26.5				23.5			3.5		
PVX 6-M5SUS	6	M5×0.8	3	25.5	29	12.5	17	20.5	12	4.2	12.5	16	1.8	2.3
PVX 6-M6SUS		M6×1	4	26.5								14.5	3	5.9
PVX 6-01SUS		R1/8	8	28.5	30.5				18			4	8.5	
PVX 6-02SUS		R1/4	11	31.5	31.5				25.5			8		
PVX 6-03SUS	R3/8	12	33	32.5	39	8.4								
PVX 8-01SUS	8	R1/8	8	30.5	33.5	14.5	18	22.5	14	4.2	12.5	23.5	6	17.1
PVX 8-02SUS		R1/4	11	33.5	34.5							29.5		17.5
PVX 8-03SUS		R3/8	12	35	35.5				42			17.4		
PVX 10-01SUS	10	R1/8	8	35	39.5	17.5	20	26.5	17	4.2	14.5	42	8	17.4
PVX 10-02SUS		R1/4	11	38	40.5							43.5		31.5
PVX 10-03SUS		R3/8	12	39	41				52			28.1		
PVX 10-04SUS		R1/2	15	42	42.5				73			24.3		
PVX 12-02SUS	12	R1/4	11	41	45.5	21	23.5	29.5	21	4.2	15.5	64	8	40.9
PVX 12-03SUS		R3/8	12	42	46							64.5		45
PVX 12-04SUS		R1/2	15	45	47.5							79.5		44.8

unit:mm

PPF
SUS304

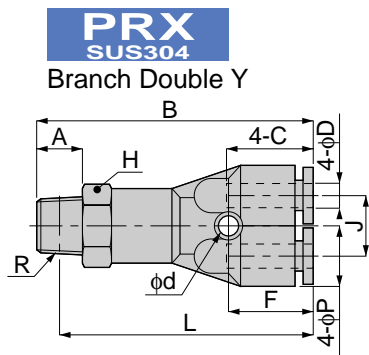
Cap



Model	ϕD	B	ϕP	C	Mass (g)
PPF 4SUS	4	16.5	10	15	2.5
PPF 6SUS	6	18.5	13	17	3.5
PPF 8SUS	8	20	15	18	5
PPF 10SUS	10	22.5	18	20.5	8
PPF 12SUS	12	25	21.5	23	11.5

Tube Fitting Series SUS304 Type

unit:mm

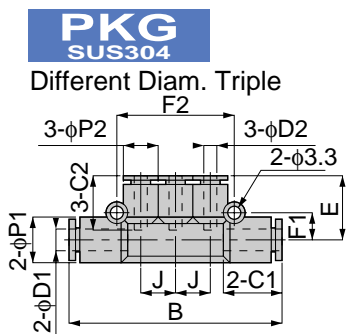


PRX
SUS304
Branch Double Y

Model	Tube dia. φD	R	A	B	L	φP	C	J	H	φd	F	Mass (g)	Orifice (φmm)	Eff. a. (mm ²)
PRX 4-01SUS	4	R1/8	8	46	42	10.5	15	10	12	3.2	14	21.5	2.3	1.5
PRX 4-02SUS		R1/4	11	49	43				14					1.4
PRX 6-01SUS	6	R1/8	8	50.5	46.5	13	17	13	14	3.5	16	29	3.9	9



unit:mm

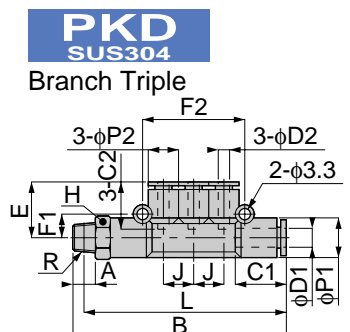


PKG
SUS304
Different Diam. Triple

Model	Tube dia. φD1	Tube dia. φD2	B	φP1	φP2	C1	C2	J	E	F1	F2	Mass (g)	Orifice (φmm)	Eff. a. (mm ²)
PKG 6-4SUS	6	4	60	13	10	17	15	10	18.5	8	34	16	3	5
PKG 8-4SUS	8	4	62.5	15	10	18	15	10	19	9	34	19	3	6
PKG 8-6SUS		6	69.5											
PKG 10-6SUS	10	6	80	18	15	20	17	14	24	10.5	46	31	4.6	11.2
PKG 10-8SUS		8												



unit:mm



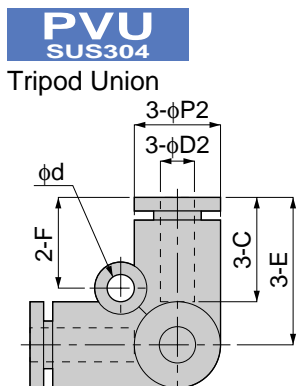
PKD
SUS304
Branch Triple

Model	Tube dia. φD1	Tube dia. φD2	R	A	B	L	φP1	φP2	C1	C2	J	E	H	F1	F2
PKD 6-4-01SUS	6	4	R1/8	8	68.5	64.5	13	10	17	15	10	18.5	12	8	34
PKD 8-4-02SUS	8	4	R1/4	11	74	68	15	10	18.5	15	10	19.5	14	9	34
PKD 8-6-02SUS		6			81	75									
PKD 10-8-03SUS	10	8	R3/8	12	93.5	87	18	15	20.5	18.5	14	24	17	10.5	46

Model	Mass (g)	Orifice (φmm)	Eff. a. (mm ²)
PKD 6-4-01SUS	23	3	5
PKD 8-4-02SUS	33.5	3	5.2
PKD 8-6-02SUS	36.5	4.6	9.6
PKD 10-8-03SUS	59.5	7	19.1



unit:mm



PVU
SUS304
Tripod Union

Model	Tube dia. φD	φP	C	E	φd	F	Mass (g)	Orifice (φmm)	Eff. a. (mm ²)
PVU 4SUS	4	10	15	17	3.2	10.5	7.5	3	3.7
PVU 6SUS	6	12.5	17	20.5	4.2	12.5	10.5	4.6	8.3
PVU 8SUS	8	14.5	18	22.5	4.2	12.5	15	6	16
PVU 10SUS	10	18	20	26.5	4.2	14.5	25.5	8	30.2
PVU 12SUS	12	21.5	23.5	29.5	4.2	15.5	36	10	40.2

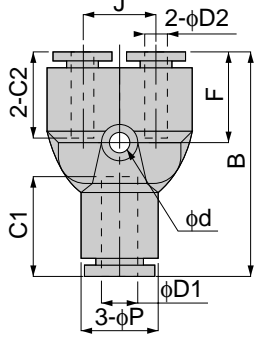


Tube Fitting Series SUS304 Type

unit:mm

PW SUS304

Different Diam. Union Y

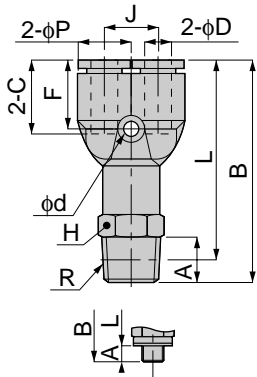


Model	Tube dia. φD1	Tube dia. φD2	B	φP	C1	C2	φd	F	Mass (g)	Orifice (φmm)	Eff. a. (mm ²)
PW 6-4SUS	6	4	37.5	13	17	15	3.2	15.5	10.5	3	4.2
PW 8-6SUS	8	6	42.5	15	18.5	17	3.2	17.5	14.5	4.6	10
PW 10-8SUS	10	8	48.5	18	20.5	18.5	4.2	19.5	23	6	16.5
PW 12-10SUS	12	10	55	21.5	23.5	20.5	4.2	22.5	35.5	7.5	27

unit:mm

PX SUS304

Branch Y



Metric thread type

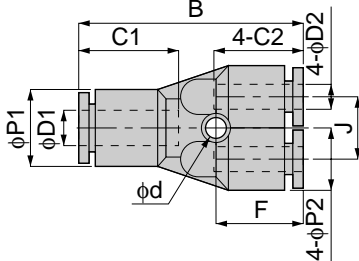


Model	Tube dia. φD	R	A	B	L	φP	C	J	H	φd	F	Mass (g)	Orifice (φmm)	Eff. a. (mm ²)	
PX 4-M5SUS	4	M5×0.8	3	38	35	10	15	11	10	3.4	14.5	12	1.8	1.5	
PX 4-M6SUS		M6×1	4	39											38
PX 4-01SUS		R1/8	8	41	23								3	4.2	
PX 4-02SUS		R1/4	11	44											
PX 6-M5SUS	6	M5×0.8	3	41.5	37.5	13	17	12	12	3.2	16	16	1.8	1.5	
PX 6-M6SUS		M6×1	4	42.5	38.5										18
PX 6-01SUS		R1/8	8	44.5	40.5								25	4.6	
PX 6-02SUS		R1/4	11	47.5	41.5										39
PX 6-03SUS		R3/8	12	49.5	43.5								17		
PX 8-01SUS		8	R1/8	8	49									45	15
PX 8-02SUS	R1/4		11	52	46	42.5									
PX 8-03SUS	R3/8		12	53.5	47										
PX 10-01SUS	10	R1/8	8	55.5	51.5	18	20.5	18	17	4.5	20	42.5	7.5	30	
PX 10-02SUS		R1/4	11	58.5	52.5										73
PX 10-03SUS		R3/8	12	59.5	53										
PX 10-04SUS		R1/2	15	62.5	54.5										
PX 12-02SUS	12	R1/4	11	63.5	57.5	21	23.5	20	21	4.5	22.5	63.5	8	37	
PX 12-03SUS		R3/8	12	64.5	58										79.5
PX 12-04SUS		R1/2	15	67.5	59.5										
PX 16-03SUS	16	R3/8	12	76.5	70	24.5	24.5	24	22	4.5	22.5	95.5	11	54.5	
PX 16-04SUS		R1/2	15	80.5	72.5										99.5

unit:mm

PRG SUS304

Different Diam. Double Y



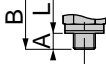
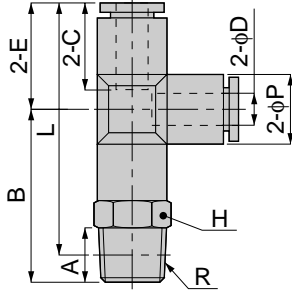
Model	Tube dia. φD1	Tube dia. φD2	B	φP1	φP2	C1	C2	J	φd	F	Mass (g)	Orifice (φmm)	Eff. a. (mm ²)
PRG 6-4SUS	6	4	37.5	13	10.5	17	15	10	3.2	14	14	2.3	1.5
PRG 8-6SUS	8	6	42.5	14.5	13	18	17	13	3.5	16	20.5	4	8.2

Tube Fitting Series SUS304 Type

unit:mm

PD SUS304

Branch Tee



Metric thread type

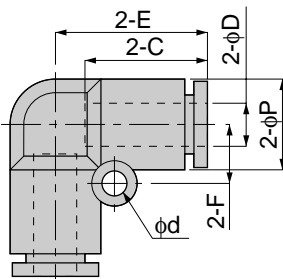


Model	Tube dia. φD	R	A	B	L	φP	C	E	H	Mass (g)	Orifice (φmm)	Eff. a. (mm ²)	
PD 4-M5SUS	4	M5×0.8	3	20.5	35	10	15	17	10	11.5	1.8	1.9	
PD 4-M6SUS		M6×1	4	21.5						16			
PD 4-01SUS		R1/8	8	24.5	37.5				14.5	3	5.3		
PD 4-02SUS		R1/4	11	27.5					23.5				
PD 6-M5SUS	6	M5×0.8	3	23	40.5	13	17	20	12	15.5	1.8	1.9	
PD 6-M6SUS		M6×1	4	24						16			3
PD 6-01SUS		R1/8	8	26	42				17	4.6	12.5		
PD 6-02SUS		R1/4	11	29	43				14			26	
PD 6-03SUS	R3/8	12	31	44.5	17	38.5							
PD 8-01SUS	8	R1/8	8	28.5	46	15	18	22	14	22.5	6	20	
PD 8-02SUS		R1/4	11	31.5	47				17				28.5
PD 8-03SUS		R3/8	12	33	48.5				17				41
PD 10-01SUS	10	R1/8	8	33	54.5	17.5	20	25.5	17	41	8	35	
PD 10-02SUS		R1/4	11	36	55.5					41.5			
PD 10-03SUS		R3/8	12	37	56				50.5	21			72
PD 10-04SUS		R1/2	15	40	57.5				72				
PD 12-02SUS	12	R1/4	11	38	60	21	23.5	28	21	61	8	35	
PD 12-03SUS		R3/8	12	39	60.5				62.5	10			59
PD 12-04SUS		R1/2	15	42	62				77.5				
PD 16-03SUS	16	R3/8	12	47	74	25	24	33.5	22	89.5	11	79.5	
PD 16-04SUS		R1/2	15	51	74.5				99	13	92.8		

unit:mm

PV SUS304

Union Elbow

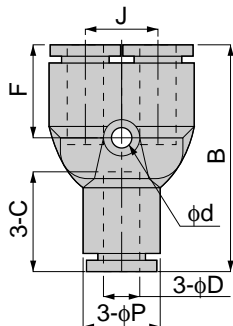


Model	Tube dia. φD	φP	C	E	φd	F	Mass (g)	Orifice (φmm)	Eff. a. (mm ²)
PV 4SUS	4	10	15	17	-	-	5	2.8	4.2
PV 6SUS	6	12.5	17	20.5	3.2	8	7.5	5	10
PV 8SUS	8	15	18	22	4.2	10	10	7	16.5
PV 10SUS	10	17.5	20	26	4.2	12	17	9	30
PV 12SUS	12	21	23.5	29	4.2	14	24.5	11	47
PV 16SUS	16	25	24	33	4.2	12	30	13	91.6

unit:mm

PY SUS304

Union Y



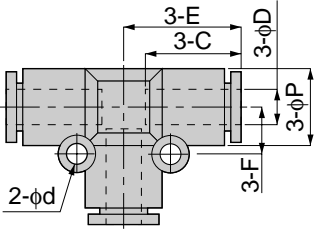
Model	Tube dia. φD	B	φP	C	J	φd	F	Mass (g)	Orifice (φmm)	Eff. a. (mm ²)
PY 4SUS	4	33.5	10	15	11	3.2	14.5	8	3	4.2
PY 6SUS	6	38	13	17	12	3.2	16	10.5	4.6	10
PY 8SUS	8	43	15	18.5	14	3.2	17.5	15.5	6	16.5
PY 10SUS	10	49	18	20.5	18	4.5	20	25.5	7.5	27
PY 12SUS	12	55	21.5	23.5	20	4.5	22.5	37	9	38
PY 16SUS	16	63	24.5	24.5	24	4.5	22.5	44	13	56.5

Tube Fitting Series SUS304 Type

unit:mm

PE SUS304

Union Tee

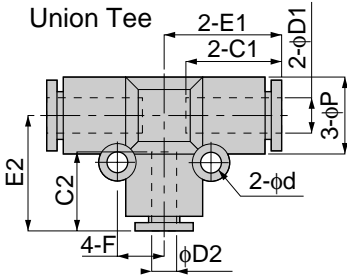


Model	Tube dia. φD	φP	C	E	φd	F	Mass (g)	Orifice (φmm)	Eff. a. (mm ²)
PE 4SUS	4	10	15	17	-	-	7	3	5.3
PE 6SUS	6	13	17	20	3.2	8	10.5	4.6	12.5
PE 8SUS	8	15	18	22	3.2	9	15.5	6	20
PE 10SUS	10	18	20	25.5	4.2	12	25.5	8	35
PE 12SUS	12	21.5	23.5	28	4.2	14	36	10	59
PE 16SUS	16	25.5	24	33	4.2	12	43.5	13	89.8

unit:mm

PEG SUS304

Different Diam. Union Tee

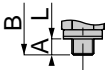
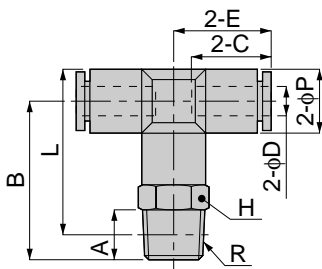


Model	Tube dia. φD1	Tube dia. φD2	φP	C1	C2	E1	E2	φd	F	Mass (g)	Orifice (φmm)	Eff. a. (mm ²)
PEG 6-4SUS	6	4	13	17	15	20.5	20	3.2	8	11	3	4.1
PEG 8-6SUS	8	6	15	18.5	18.5	22.5	20.5	3.2	9	15	5	10.3
PEG 10-8SUS	10	8	17.5	20.5	20.5	25.5	25	4.2	12	24	7	19.6
PEG 12-10SUS	12	10	21	23.5	23.5	29.5	29.5	4.2	14	35	9	32.5

unit:mm

PB SUS304

Tee



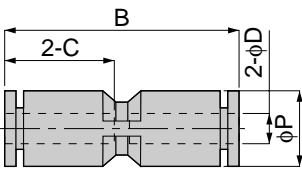
Metric thread type



Model	Tube dia. φD	R	A	B	L	φP	C	E	H	Mass (g)	Orifice (φmm)	Eff. a. (mm ²)
PB 4-M5SUS	4	M5×0.8	3	20.5	23	10	15	17	10	11.5	1.8	1.5
PB 4-M6SUS		M6×1	4	21.5						14		
PB 4-01SUS		R1/8	8	23.5	24.5					24	3	4.1
PB 4-02SUS		R1/4	11	26.5	26.5							
PB 6-M5SUS	6	M5×0.8	3	23	27	13	17	20.5	12	15.5	1.8	1.5
PB 6-M6SUS		M6×1	4	24						16		
PB 6-01SUS		R1/8	8	26	28.5					17.5	4.6	10
PB 6-02SUS		R1/4	11	29	29.5							
PB 6-03SUS		R3/8	12	31	31					17	38.5	
PB 8-01SUS	8	R1/8	8	26.5	30	15	18	22.5	14	22.5	6	16.5
PB 8-02SUS		R1/4	11	29.5	31					28		
PB 8-03SUS		R3/8	12	31.5	32.5					17		
PB 10-01SUS	10	R1/8	8	33	37.5	17.5	20	25.5	17	41	8	30
PB 10-02SUS		R1/4	11	36	38.5					41.5		
PB 10-03SUS		R3/8	12	37	39					50.5		
PB 10-04SUS		R1/2	15	40	40.5					21		
PB 12-02SUS	12	R1/4	11	38	42.5	21	23.5	28	21	61.5	8	30
PB 12-03SUS		R3/8	12	39	43					77		
PB 12-04SUS		R1/2	15	42	44.5					77	10	47
PB 16-03SUS	16	R3/8	12	47	53	25	25	33.5	22	95	11	80.1
PB 16-04SUS		R1/2	15	51	55.5					99	13	90.8

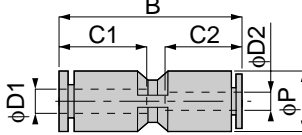
Tube Fitting Series SUS304 Type

PU SUS304 Union Straight



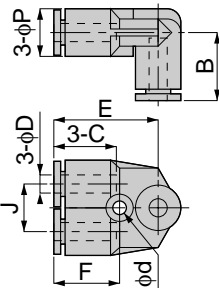
Mode	Tube dia. φD	B	φP	C	Mass (g)	Orifice (φmm)	Eff. a. (mm ²)
PU 4SUS	4	31	10	15	5	3.8	5.3
PU 6SUS	6	35	12.5	17	6.5	5.5	12.5
PU 8SUS	8	38	14.5	18	9.5	7	20
PU 10SUS	10	44	17.5	20	16	9	35
PU 12SUS	12	48	21	23.5	22	11	59
PU 16SUS	16	50	25	24.5	25	13	147.6

PG SUS304 Different Diam. Union Straight



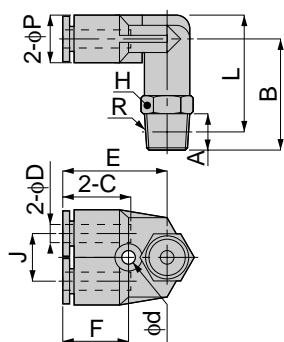
Mode	Tube dia. φD1	Tube dia. φD2	B	φP	C1	C2	Mass (g)	Orifice (φmm)	Eff. a. (mm ²)
PG 6-4SUS	6	4	34.5	12.5	17	15	6.5	3	5.3
PG 8-6SUS	8	6	38.5	14.5	18	17	9	5.5	12.5
PG 10-8SUS	10	8	44	17.5	20	18	14.5	7	20
PG 12-10SUS	12	10	53.5	21	23.5	20	22.5	9	35
PG 16-12SUS	16	12	49.5	25	24.5	23.5	26.5	10	88.6

PAU SUS304 Union A



Mode	Tube dia. φD	B	φP	C	J	E	φd	F	Mass (g)	Orifice (φmm)	Eff. a. (mm ²)
PAU 4SUS	4	17	10	15	11	23	3.2	14.5	8	3	2.5
PAU 6SUS	6	20	12.5	17	12	26.5	4.2	15.5	11.5	4.6	7.2
PAU 8SUS	8	23	14.5	18	14	29.5	4.2	17	16.5	6	16.3
PAU 10SUS	10	25.5	18	20	18	34	4.2	19	27	8	27.9
PAU 12SUS	12	29.5	21.5	23.5	20	35.5	4.2	20.5	39	10	40

PAX SUS304 Branch Elbow



Metric thread type



Mode	Tube dia. φD	R	A	B	L	φP	C	J	E	H	φd	F	Mass (g)	Orifice (φmm)	Eff. a. (mm ²)																					
PAX 4-M5SUS	4	M5×0.8	3	21.5	23.5	10	15	11	18	10	3.2	14.5	12.5	1.8	2.2																					
PAX 4-M6SUS		M6×1	4	22.5												25.5																				
PAX 4-01SUS		R1/8	8	24.5													26.5	23	14	15.5	3	2.7														
PAX 4-02SUS		R1/4	11	27.5																			24	2.5												
PAX 6-M5SUS	M5×0.8	3	25	28	20.5	12	4.2	15.5	17	1.8	2.2																									
PAX 6-M6SUS	M6×1	4	26									17.5	3	6.4																						
PAX 6-01SUS	R1/8	8	28												30	12	26.5	14	18.5	4.6	6.6															
PAX 6-02SUS	R1/4	11	31																			31	17	39.5	26.5	4.6	6.6									
PAX 6-03SUS	R3/8	12	33	32.5	17	6.8																														
PAX 8-01SUS	R1/8	8	31				34	14.5	18	14	29.5	14	4.2	17														25	6	14.6						
PAX 8-02SUS	R1/4	11	34												35	21.5	23.5	20	35.5	21	4.2										20.5	30.5	6	14.5		
PAX 8-03SUS	R3/8	12	36																			36.5	20	35.5	20	35.5	21								4.2	20.5
PAX 10-01SUS	R1/8	8	34	39	18	20																														
PAX 10-02SUS	R1/4	11	37				40	18	20	18	34	17	4.2	19														45	8	26.1						
PAX 10-03SUS	R3/8	12	38												40.5	18	20	18	34	17	4.2										19	53.5	8	27.2		
PAX 10-04SUS	R1/2	15	41																			42	18	20	18	34	17								4.2	19
PAX 12-02SUS	R1/4	11	41	45.5	21.5	23.5																														
PAX 12-03SUS	R3/8	12	42				46	21.5	23.5	20	35.5	21	4.2	20.5														67	10	43.1						
PAX 12-04SUS	R1/2	15	45												47.5	21.5	23.5	20	35.5	21	4.2										20.5	83	10	42.1		