

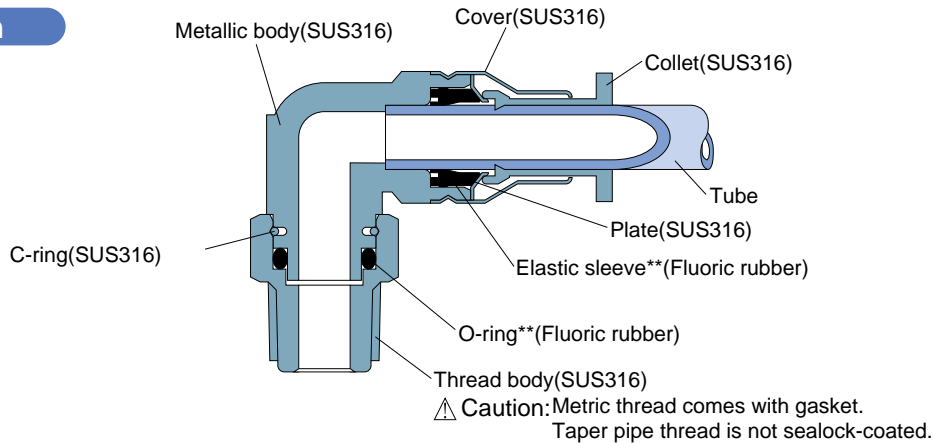
Quick-Fitting Joint Made of Stainless Steel

Tube Fitting Stainless SUS316 Series

Features

- All the parts except the sealing parts are of SUS316 which is highly resistant to corrosion. The seal is fluoroc rubber and highly resistant to chemicals.
- The components are all of oil-free specification and in compliance with the Japanese Food Sanitation Act.
- With polyamid tube, this series can be used in food processing. With Fluororesin tube, this series can be used in chemical and medical applications.

Construction



**Sealing material can be order-made.

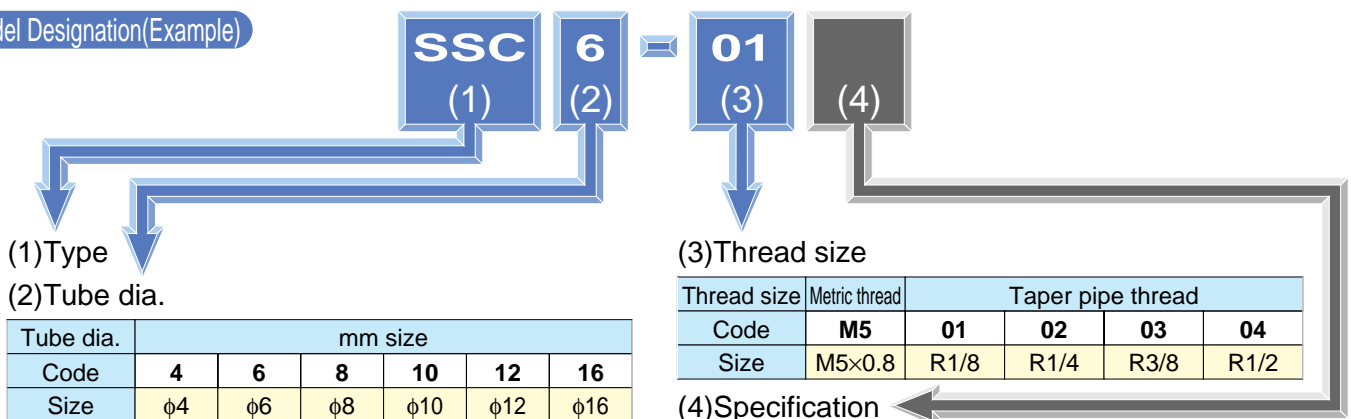
Specifications

Fluid admitted	Air, water, others* ¹
Service pressure range	Gas: 0~145psi (0~1MPa)
	Fluid: 0~43.5psi (0~0.3MPa)* ²
Working vacuum	-29.5in.Hg or -100KPa
Service temperature range	5~248°F (-15~120°C)

⚠ Warning

- *1 Chemicals and mixed gases can be out of specification depending on the service conditions. Please contact PISCO before usage.
- *2 Use insert ring when fluid is admitted.

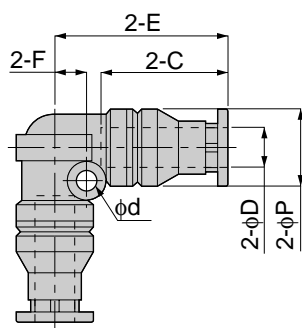
Model Designation(Example)



- X : Non-splash grease specification
(Non-splash grease coating is applied to seal packing)
- No entry : Oil-free specification
(Conventional product)

Tube Fitting Series SUS316 Type

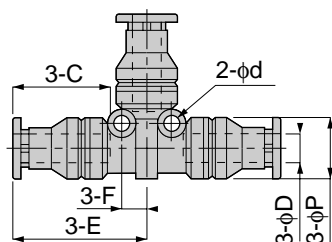
SSV SUS316 Union Elbow



Model	Tube dia. φD	φP	C		E		φd	F	Mass (g)	Orifice (φmm)	Eff. a. (mm ²)
			min	max	min	max					
SSV 4	4	10	17.5	18	23.5	24	3.2	4	12.5	2.5	3.5
SSV 6	6	12	18.5	20	26	27.5	3.2	5	19.5	4.6	9.5
SSV 8	8	14	20.5	22	29.5	31	4.2	6	28.5	6	20.8
SSV 10	10	17	24	25.5	33.5	35	4.2	7	40.5	8	29.5
SSV 12	12	20	25.5	27.5	36	38	4.2	8	57.5	10	48
SSV 16	16	23.5	31	33	43.5	45.5	4.2	9.5	91	13	69.5



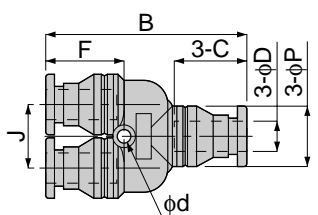
SSE SUS316 Union Tee



Model	Tube dia. φD	φP	C		E		φd	F	Mass (g)	Orifice (φmm)	Eff. a. (mm ²)
			min	max	min	max					
SSE 4	4	10	17.5	18	23.5	24	3.2	4	18	2.5	3.5
SSE 6	6	12	18.5	20	26	27.5	3.2	5	27.5	4.6	9.8
SSE 8	8	14	20.5	22	29.5	31	4.2	6	39	6	20
SSE 10	10	17	24	25.5	33.5	35	4.2	7	57	8	28.8
SSE 12	12	20	25.5	27.5	36	38	4.2	8	79	10	50
SSE 16	16	23.5	31	33	43.5	45.5	4.2	9.5	124	13	74



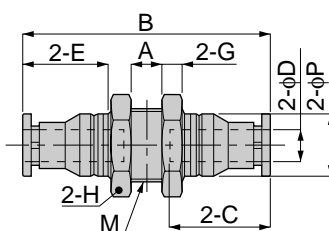
New SSY SUS316 Union Y



Model	Tube dia. φD	B		φP	C		J	φd	F		Mass (g)	Orifice (φmm)	Eff. a. (mm ²)
		min	max		min	max			min	max			
SSY 4	4	38	40	10	17	18	11	3.2	17	18	15	5	3
SSY 6	6	41	44	12	18	19.5	13	3.2	17	18.5	23.5	12.4	8.5
SSY 8	8	48	51	14	20.5	22	15	3.2	19.5	21	34	34.2	19
SSY 10	10	55	58	17	23.5	25	18	4.3	21.5	23.5	51.5	39	24.8
SSY 12	12	60	64	20	25	27	21	4.3	23	24	79	66.6	38.5
SSY 16	16	74	79	23.5	30.5	33	25	4.3	28	30.5	121	117	53



SSM SUS316 Bulkhead Union

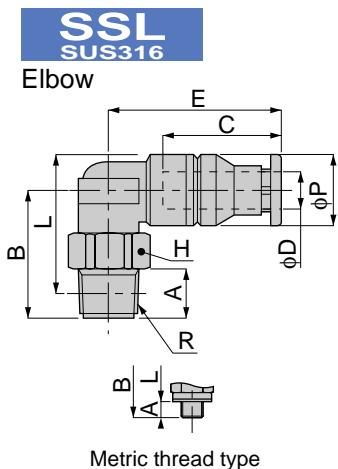


Model	Tube dia. φD	M	A	B		φP	C		E		H	G	Mass (g)	Orifice (φmm)	Eff. a. (mm ²)
				min	max		min	max	min	max					
SSM 4	4	M12×1	4	43.5	45.5	10	17.5	18	15.5	16	14	4	18.5	3	4.5
SSM 6	6	M14×1	6	46	49	12	18.5	20	15.5	17	17	4	27.5	4.6	10.8
SSM 8	8	M16×1	6	50	53	14	20.5	22	17.5	19	19	4	35.5	6.5	25.5
SSM 10	10	M20×1	6	56	59	17	24	25.5	19.5	21	24	5	60	8.5	34.8
SSM 12	12	M22×1	6	61.5	65	20	25.5	27.5	21	23	27	6	86	10	48.5
SSM 16	16	M27×1.5	5.5	71	75	23.5	31	33	26	28	32	6	116.5	14	85.5



Tube Fitting Series SUS316 Type

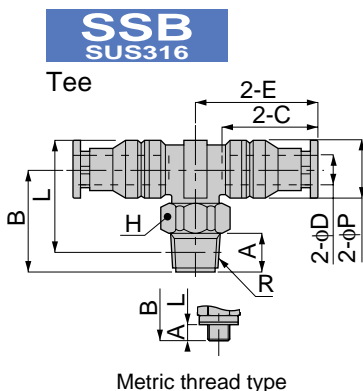
unit:mm



Model	Tube dia. φD	R	A	B	L	φP	C		E		H	Mass (g)	Orifice (φmm)	Eff. a. (mm ²)
							min	max	min	max				
SSL 4-M5	4	M5×0.8	3	17.5	20	10	17.5	18	22	22.5	10	11.5	2	3
SSL 4-01		R1/8	8	20	21							14	3	3.8
SSL 6-M5	6	M5×0.8	3	19.5	23	12	18.5	20	24	25.5	12	17.5	2	3
SSL 6-01		R1/8	8	21	23							18.5	4.6	11.8
SSL 6-02		R1/4	11	24	24							14		26
SSL 8-01	8	R1/8	8	23	26	14	20.5	22	26	27.5	14	25	6	21
SSL 8-02		R1/4	11	26	27							30.5		20.5
SSL 10-02	10	R1/4	11	29	31.5	17	24	25.5	29.5	31	17	40.5	8	28
SSL 10-03		R3/8	12	30	32							47.5		
SSL 12-03	12	R3/8	12	34	37.5	20	25.5	27.5	34	36	21	68.5	10	52
SSL 12-04		R1/2	15	37	39							22		86
SSL 16-04	16	R1/2	15	40	43.5	23.5	31	33	43.5	45.5	24	106.5	13	68.8



1



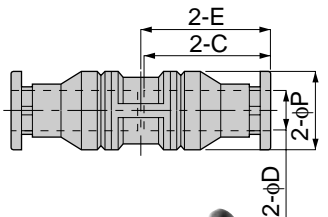
Model	Tube dia. φD	R	A	B	L	φP	C		E		H	Mass (g)	Orifice (φmm)	Eff. a. (mm ²)
							min	max	min	max				
SSB 4-M5	4	M5×0.8	3	17.5	20	10	17.5	18	22	22.5	10	16.5	2	3
SSB 4-01		R1/8	8	20	21							19	3	3.5
SSB 6-M5	6	M5×0.8	3	19.5	23	12	18.5	20	24	25.5	12	24.5	2	3
SSB 6-01		R1/8	8	21	23							25.5	4.6	10.5
SSB 6-02		R1/4	11	24	24							33		
SSB 8-01	8	R1/8	8	23	26	14	20.5	22	26	27.5	14	33.5	6	20
SSB 8-02		R1/4	11	26	27							38.5		
SSB 10-02	10	R1/4	11	29	31.5	17	24	25.5	29.5	31	17	52.5	8	27
SSB 10-03		R3/8	12	30	32							60		
SSB 12-03	12	R3/8	12	34	37.5	20	25.5	27.5	34	36	21	90.5	10	51
SSB 12-04		R1/2	15	37	39							22		108
SSB 16-04	16	R1/2	15	38	41.5	23.5	31	33	43.5	45.5	24	142.5	13	71



1



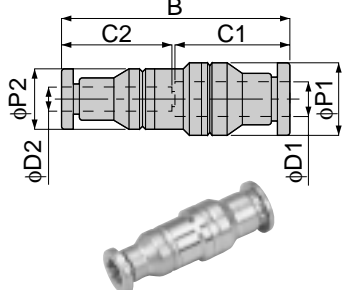
Model	Tube dia. φD	φP	C		E		Mass (g)	Orifice (φmm)	Eff. a. (mm ²)
			min	max	min	max			
SSU 4	4	10	17.5	18	18	18.5	8.5	2.5	4.5
SSU 6	6	12	18.5	20	19	20.5	12	4.6	10.8
SSU 8	8	14	20.5	22	21	22.5	16	6	26
SSU 10	10	17	24	25.5	25	26.5	25	8.5	34.5
SSU 12	12	20	25.5	27.5	26.5	28.5	38	10	49.5
SSU 16	16	23.5	31	33	32	34	55.5	14	86



1



Model	Tube dia. φD1	Tube dia. φD2	B		φP1	φP2	C1		C2		Mass (g)	Orifice (φmm)	Eff. a. (mm ²)
			min	max			min	max	min	max			
SSG 6-4	6	4	36	38.5	12	10	18	19.5	17	18	10.5	4.9	4
SSG 8-6	8	6	39	42	14	12	20.5	22	18	19.5	14.5	16.6	10.5
SSG 10-8	10	8	45	48	17	14	23.5	25	20.5	22	21.5	28.3	23
SSG 12-10	12	10	48.5	52	20	17	25	27	23.5	25	34	56.7	29.5
SSG 16-12	16	12	56.5	61	23.5	20	30.5	33	25	27	49.5	78.5	42



1

⚠ Detailed Safety Instructions

Before using the PISCO device, be sure to read the "Safety Instructions", "Common Safety Instructions for Products Listed in This Manual" on page 23~24 and "Common Safety Instructions for Quick-Fitting Joint" on page 29~31.

⚠ Warning

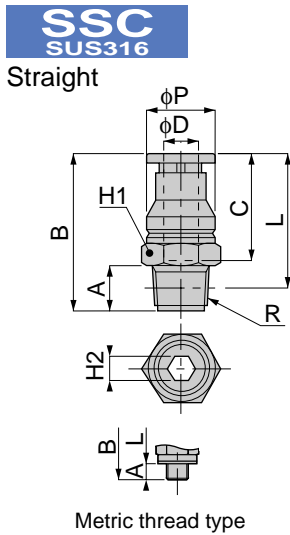
1. When the fluid admitted is a chemical, be sure to contact PISCO for guidance. Depending on usage, damage may be caused to the joint body, the tube may come off or leakage may result.
2. When the fluid admitted is a liquid, use an insert ring. Without the use of an insert ring, the tube may come off or leakage may occur.
3. After connecting the tube, be sure to pull the tube toward you and make certain that it does not come off. If the tube comes off, pull the collet once(see table below), connect the tube again and check for proper connection by pulling it again.

● Table

Table dia.	Tensile force of collet
φ4	10~20N(2.25~4.50lbf)
φ6	40~60N(8.99~13.49lbf)
φ8	50~70N(11.24~15.74lbf)
φ10	60~70N(13.49~15.74lbf)
φ12	70~90N(15.74~20.23lbf)
φ16	60~80N(13.49~17.98lbf)

⚠ Caution

1. Note that the taper pipe thread is not Sealock-treated. When you use seal tape or sealant on the thread, apply the tape or sealant about 1.5 or 2 thread ridges away from the thread end.



Model	Tube dia. φD	R	A	B		L		φP	C		H1	H2	Mass (g)	Orifice (φmm)	Eff. a. (mm ²)
				min	max	min	max		min	max					
SSC 4-M5	4	M5×0.8	3	24	24.5	21	21.5	10	17.5	18	10	2	6	2	3
SSC 4-01		R1/8	8	26.5	27	22.5	23					3	8	3	5
SSC 6-M5	6	M5×0.8	3	25	26.5	22	23.5	12	18.5	20	12	2	8	2.1	3
SSC 6-01		R1/8	8	26.5	28	22.5	24					4	9.5	4.2	13.5
SSC 6-02		R1/4	11	31.5	33	25.5	27					18.5	13.8		
SSC 8-01	8	R1/8	8	29.5	31	25.5	27	14	20.5	22	14	5	12.5	5.3	20.5
SSC 8-02		R1/4	11	32.5	34	26.5	28					6	17	6.3	26.8
SSC 10-02	10	R1/4	11	35.5	37	29.5	31	17	24	25.5	17	6	22	6.3	27.5
SSC 10-03		R3/8	12	36.5	38	30	31.5					30	30	6.3	28.5
SSC 12-03	12	R3/8	12	38	40	32	33.5	20	25.5	27.5	21	8	36.5	8.5	45.5
SSC 12-04		R1/2	15	41	43	33	35								22
SSC 16-04	16	R1/2	15	49	51	41	43	23.5	31	33	24	12	58.5	12.6	79.8

