

Tube Fitting Stainless anti-corrosive equiv to SUS303

Features

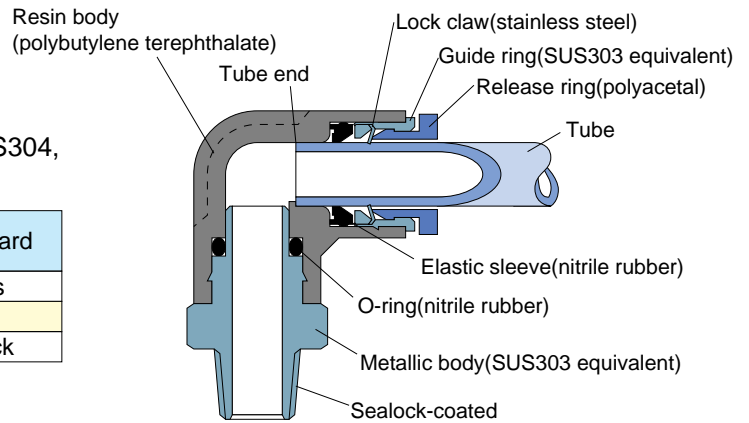
■ This stainless model is made of Cr20%, Mo2%. Accordingly, requiring strength it is suited to use within a chemical's atmospheric range. Nitrile rubber is used for the seal.

Construction

⚠ Caution

● How to distinguish SUS303 equivalent, SUS304, and standard fittings.

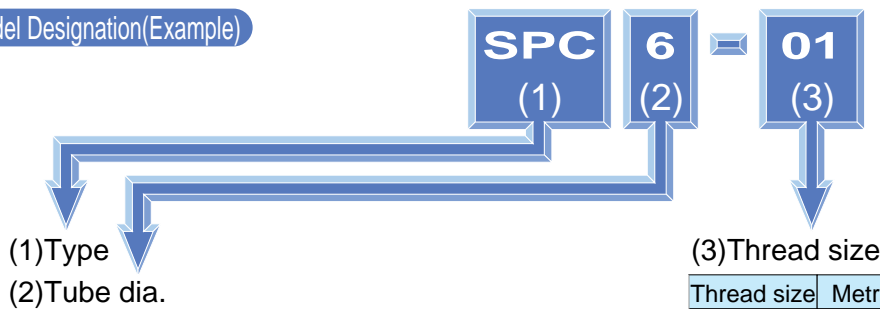
	SUS304	SUS303 equivalent	standard
Guide ring V groove	yes	no	yes
Thread hexagon flat groove	yes	no	no
Release ring color	dark blue	dark blue	black



Specifications

Fluid admitted	Air
Service pressure range	0~150 psi (0~0.9MPa)
Working vacuum	-27.6 in.Hg (-93kPa)
Service temperature range	32~140°F (0~60°C)

Model Designation(Example)



Tube dia.	mm size					
Code	4	6	8	10	12	16
Size	φ4	φ6	φ8	φ10	φ12	φ16

Thread size	Metric thread		Taper pipe thread			
Code	M5	M6	01	02	03	04
Size	M5×0.8	M6×1	R1/8	R1/4	R3/8	R1/2

**When (3) is tube diameter, choose tube diameter from (2).

⚠ Detailed Safety Instructions

Before using the PISCO device, be sure to read the "Safety Instructions", "Common Safety Instructions for Products Listed in this Manual" on page 23~24 and "Common Safety Instructions for Quick-Fitting Joint" on pages 29~31.

⚠ Warning

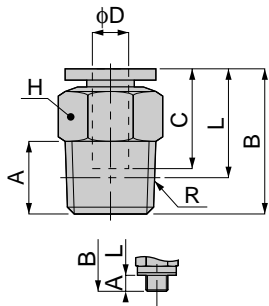
1. Chemical resistance is equivalent to SUS440. When greater resistance is required, please use SUS316 fittings.
2. When you use this tube fitting in a corrosive environment, contact PISCO for necessary instructions. Depending on the service conditions, the joint body may be damaged.

Tube Fitting Series SUS303 Type

unit:mm

SPC
SUS303

Straight



Metric thread type

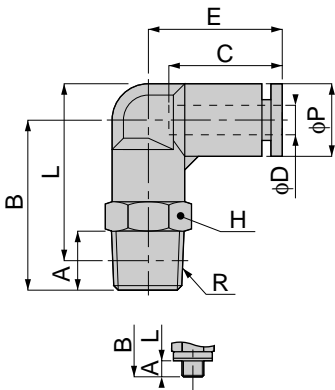


Model	Tube dia. ϕD	R	A	B	L	C	H	Mass (g)	Orifice (ϕmm)	Eff. a. (mm^2)	
SPC 4-M5	4	M5 \times 0.8	3	20.5	17.5	15	10	6.5	1.8	1.9	
SPC 4-M50				23	20		8				
SPC 4-M6		M6 \times 1	4		18.5		10				8.5
SPC 4-01		R1/8	8	21.5	17.5		14	16	5.3		
SPC 4-02		R1/4	11		15.5						
SPC 6-M5	6	M5 \times 0.8	3	22.5	19.5	17	12	9	1.8	1.9	
SPC 6-M6				4	23.5			9.5	3	6.2	
SPC 6-01		R1/8	8	23	19		9	4.6	12.5		
SPC 6-02		R1/4	11	25			14			17	
SPC 6-03		R3/8	12	24	17		17			27	
SPC 8-01	8	R1/8	8	28	24	18	14	15	6	20	
SPC 8-02		R1/4	11	26.5	20.5		17	23	7		
SPC 8-03		R3/8	12	24	17.5						
SPC 10-01	10	R1/8	8	30.5	26.5	20	17	22.5	6	22.9	
SPC 10-02		R1/4	11	30	24			20	8.5		35
SPC 10-03		R3/8	12	29.5	23			26			
SPC 10-04		R1/2	15	30.5	22.5		49				
SPC 12-02	12	R1/4	11	36	30	23.5	21	43	8.5	35	
SPC 12-03		R3/8	12	32	25.5			35.5	11		59
SPC 12-04		R1/2	15	34	26			49.5			
SPC 16-03	16	R3/8	12	39.5	33	24.5	24	59.5	11	83.3	
SPC 16-04		R1/2	15	41.5	33.5			67	13		114

unit:mm

SPL
SUS303

Elbow



Metric thread type



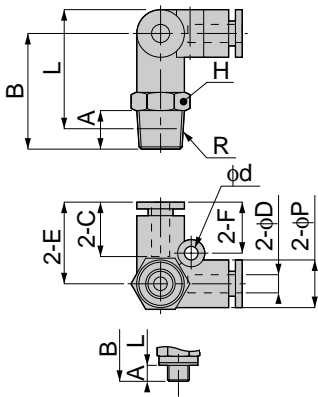
Model	Tube dia. ϕD	R	A	B	L	ϕP	C	E	H	Mass (g)	Orifice (ϕmm)	Eff. a. (mm^2)	
SPL 4-M5	4	M5 \times 0.8	3	21.5	24.5	10	15	17	10	9	1.8	1.5	
SPL 4-M6				4						22.5	9.5		3
SPL 4-01		R1/8	8	23.5						24.5	12		
SPL 4-02		R1/4	11	26.5				25.5	21				
SPL 6-M5		6	M5 \times 0.8	3				22	25.5	12.5	17	19.5	12
SPL 6-M6				4	23	12.5	3	6.1					
SPL 6-01	R1/8		8	25	27	14	4.6						
SPL 6-02	R1/4		11	28	28	22							
SPL 6-03	R3/8		12	30	29.5	35							
SPL 8-01	8	R1/8	8	28	31	14.5	18	23	14	18	6	16.5	
SPL 8-02		R1/4	11	31	32				24				
SPL 8-03		R3/8	12	33	33.5				37				
SPL 10-01	10	R1/8	8	36	38.5	17.5	20	26.5	17	31	6	22.4	
SPL 10-02		R1/4	11	37	39					34	8		30
SPL 10-03		R3/8	12	40	40.5					42			
SPL 10-04		R1/2	15	37.5					64				
SPL 12-02	12	R1/4	11	39	43	21	23.5	29.5	21	50.5	8	30	
SPL 12-03		R3/8	12	41.5	44.5					51.5	10		47
SPL 12-04		R1/2	15	33	39.5					66			
SPL 16-03	16	R3/8	12	47	53	25	24.5	33.5	22	81.5	13	80.2	
SPL 16-04		R1/2	15	51	55.5					85.5			93.3

Tube Fitting Series SUS303 Type

New

SPVX
SUS303

Tripod Elbow



Metric thread type



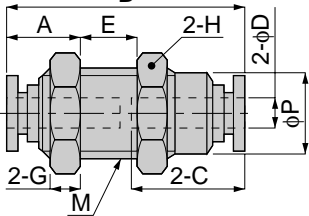
unit:mm

Model	Tube dia. φD	R	A	B	L	φP	C	E	H	φd	F	Mass (g)	Orifice (φmm)	Eff. a. (mm ²)	
SPVX 4-M5	4	M5×0.8	3	21.5	24.5	10	15	17	10	3.2	10.5	11.5	1.8	2.3	
SPVX 4-M6		M6×1	4	22.5								12		3.6	
SPVX 4-01		R1/8	8	24.5								25.5	14.5	3	4
SPVX 4-02		R1/4	11	27.5								26.5	23.5		3.5
SPVX 6-M5	6	M5×0.8	3	25.5	29	12.5	17	20.5	12	4.2	12.5	16	1.8	2.3	
SPVX 6-M6		M6×1	4	26.5								14.5	3	5.9	
SPVX 6-01		R1/8	8	28.5								30.5	18	4	8.5
SPVX 6-02		R1/4	11	31.5								31.5	25.5		8
SPVX 6-03	R3/8	12	33	32.5	39	8.4									
SPVX 8-01	8	R1/8	8	30.5	33.5	14.5	18	22.5	14	4.2	12.5	23.5	6	17.1	
SPVX 8-02		R1/4	11	33.5	34.5							29.5		17.5	
SPVX 8-03		R3/8	12	35	35.5							42		17.4	
SPVX 10-01	10	R1/8	8	35	39.5	17.5	20	26.5	17	4.2	14.5	42	8	17.4	
SPVX 10-02		R1/4	11	38	40.5							43.5		31.5	
SPVX 10-03		R3/8	12	39	41							52		28.1	
SPVX 10-04		R1/2	15	42	42.5				73			24.3			
SPVX 12-02	12	R1/4	11	41	45.5	21	23.5	29.5	21	4.2	15.5	64	8	40.9	
SPVX 12-03		R3/8	12	42	46							64.5		45	
SPVX 12-04		R1/2	15	45	47.5							79.5	44.8		

unit:mm

SPM
SUS303

Bulkhead Union



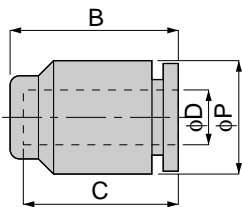
Model	Tube dia. φD	M	A	B	φP	C	E	H	G	Mass (g)	Orifice (φmm)	Eff. a. (mm ²)
SPM 4	4	M12×1	9.5	31.5	11	15	7	14	4	10.5	3	5.3
SPM 6	6	M14×1	10	35.5	12.5	17	10	17	4	16	4.6	12.5
SPM 8	8	M16×1	10.5	38	14.5	18	9	19	4	19.5	6	20
SPM 10	10	M20×1	11.5	43	18.5	20	13	24	5	37.5	8	35
SPM 12	12	M22×1	12.5	48	20.5	23.5	18	27	6	56	11	71

unit:mm

New

SPPF
SUS303

Cap

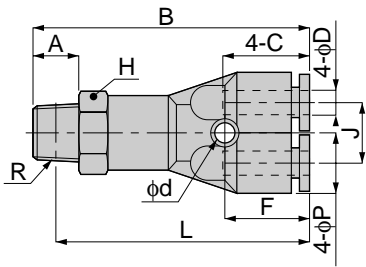


Model	Tube dia. φD	B	φP	C	Mass (g)
SPPF 4	4	16.5	10	15	2.5
SPPF 6	6	18.5	13	17	3.5
SPPF 8	8	20	15	18	5
SPPF 10	10	22.5	18	20.5	8
SPPF 12	12	25	21.5	23	11.5

Tube Fitting Series SUS303 Type

New
SPRX
SUS303

Branch Double Y

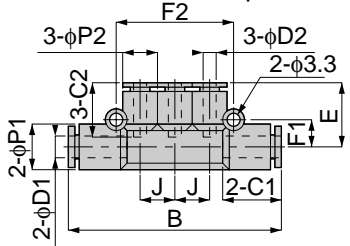


Model	Tube dia. ϕD	R	A	B	L	ϕP	C	J	H	ϕd	F	Mass (g)	Orifice (ϕmm)	Eff. a. (mm^2)
SPRX 4-01	4	R1/8	8	46	42	10.5	15	10	12	3.2	14	21.5	2.3	1.5
SPRX 4-02		R1/4	11	49	43				14			29.5		1.4
SPRX 6-01	6	R1/8	8	50.5	46.5	13	17	13	14	3.5	16	29	3.9	9

unit:mm

New
SPKG
SUS303

Different Diam. Triple

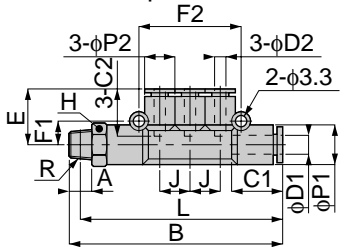


Model	Tube dia. $\phi D1$	Tube dia. $\phi D2$	B	$\phi P1$	$\phi P2$	C1	C2	J	E	F1	F2	Mass (g)	Orifice (ϕmm)	Eff. a. (mm^2)
SPKG 6-4	6	4	60	13	10	17	15	10	18.5	8	34	16	3	5
SPKG 8-4	8	4	62.5	15	10	18	15	10	19	9	34	19	3	6
SPKG 8-6		6	69.5		13									
SPKG 10-6	10	6	80	18	15	20	17	14	24	10.5	46	31	4.6	11.2
SPKG 10-8		8												

unit:mm

New
SPKD
SUS303

Branch Triple



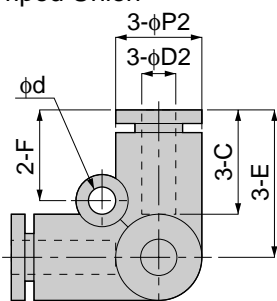
Model	Tube dia. $\phi D1$	Tube dia. $\phi D2$	R	A	B	L	$\phi P1$	$\phi P2$	C1	C2	J	E	H	F1	F2
SPKD 6-4-01	6	4	R1/8	8	68.5	64.5	13	10	17	15	10	18.5	12	8	34
SPKD 8-4-02	8	4	R1/4	11	74	68	15	10	18.5	15	10	19.5	14	9	34
SPKD 8-6-02		6			81	75									
SPKD 10-8-03	10	8	R3/8	12	93.5	87	18	15	20.5	18.5	14	24	17	10.5	46

unit:mm

Model	Mass (g)	Orifice (ϕmm)	Eff. a. (mm^2)
SPKD 6-4-01	23	3	5
SPKD 8-4-02	33.5	3	5.2
SPKD 8-6-02	36.5	4.6	9.6
SPKD 10-8-03	59.5	7	19.1

New
SPVU
SUS303

Tripod Union



Model	Tube dia. ϕD	ϕP	C	E	ϕd	F	Mass (g)	Orifice (ϕmm)	Eff. a. (mm^2)
SPVU 4	4	10	15	17	3.2	10.5	7.5	3	3.7
SPVU 6	6	12.5	17	20.5	4.2	12.5	10.5	4.6	8.3
SPVU 8	8	14.5	18	22.5	4.2	12.5	15	6	16
SPVU 10	10	18	20	26.5	4.2	14.5	25.5	8	30.2
SPVU 12	12	21.5	23.5	29.5	4.2	15.5	36	10	40.2

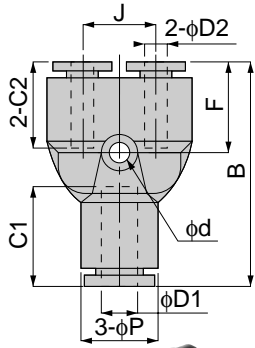
unit:mm

Tube Fitting Series SUS303 Type

New

SPW
SUS303

Different Diam. Union Y



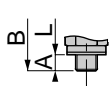
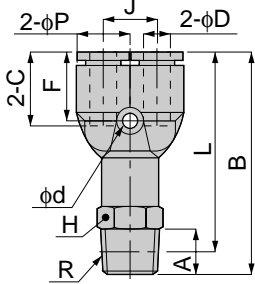
unit:mm

Model	Tube dia. φD1	Tube dia. φD2	B	φP	C1	C2	φd	F	Mass (g)	Orifice (φmm)	Eff. a. (mm ²)
SPW 6-4	6	4	37.5	13	17	15	3.2	15.5	10.5	3	4.2
SPW 8-6	8	6	42.5	15	18.5	17	3.2	17.5	14.5	4.6	10
SPW 10-8	10	8	48.5	18	20.5	18.5	4.2	19.5	23	6	16.5
SPW 12-10	12	10	55	21.5	23.5	20.5	4.2	22.5	35.5	7.5	27

New

SPX
SUS303

Branch Y



Metric thread type



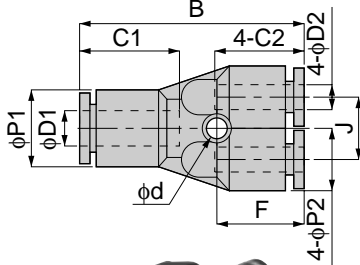
unit:mm

Model	Tube dia. φD	R	A	B	L	φP	C	J	H	φd	F	Mass (g)	Orifice (φmm)	Eff. a. (mm ²)									
SPX 4-M5	4	M5×0.8	3	38	35	10	15	11	10	3.4	14.5	12	1.8	1.5									
SPX 4-M6		M6×1	4	39									38	14	3.2	23	3	4.2					
SPX 4-01		R1/8	8	41	14				3.2								23	4.6	10				
SPX 4-02		R1/4	11	44									17	3.2	39	6				16.5			
SPX 6-M5	6	M5×0.8	3	41.5	37.5	13	17	12	12	3.2	16	1.8					1.5						
SPX 6-M6		M6×1	4	42.5	38.5							14	3.2	25	4.6	10							
SPX 6-01		R1/8	8	44.5	40.5				17								3.2	39	6	16.5			
SPX 6-02		R1/4	11	47.5	41.5							21	23.5	20	21	4.5					22.5	63.5	8
SPX 6-03		R3/8	12	49.5	43.5				21								23.5	20	21	4.5			
SPX 8-01		8	R1/8	8	49							45	15	18.5	14	14					3.2	17.5	23.5
SPX 8-02	R1/4		11	52	46	21	23.5	20	21	4.5	22.5	64.5					9	37					
SPX 8-03	R3/8		12	53.5	47														24.5	24.5			
SPX 10-01	10	R1/8	8	55.5	51.5	18	20.5	18	17	4.5	20	42.5	7.5	30									
SPX 10-02		R1/4	11	58.5	52.5										21	23.5	20	21	4.5	22.5	64.5	9	37
SPX 10-03		R3/8	12	59.5	53				24.5														
SPX 10-04		R1/2	15	62.5	54.5										24.5	24.5	24	22	4.5	22.5	99.5	13	59
SPX 12-02	12	R1/4	11	63.5	57.5	21	23.5	20	21	4.5	22.5	63.5	8	37									
SPX 12-03		R3/8	12	64.5	58										24.5	24.5	24	22	4.5	22.5	95.5	11	54.5
SPX 12-04		R1/2	15	67.5	59.5																		
SPX 16-03	16	R3/8	12	76.5	70	24.5	24.5	24	22	4.5	22.5	95.5	11	54.5									
SPX 16-04		R1/2	15	80.5	72.5										24.5	24.5	24	22	4.5	22.5	99.5	13	59

New

SPRG
SUS303

Different Diam. Double Y



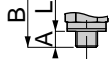
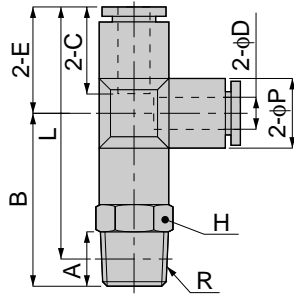
unit:mm

Model	Tube dia. φD1	Tube dia. φD2	B	φP1	φP2	C1	C2	J	φd	F	Mass (g)	Orifice (φmm)	Eff. a. (mm ²)
SPRG 6-4	6	4	37.5	13	10.5	17	15	10	3.2	14	14	2.3	1.5
SPRG 8-6	8	6	42.5	14.5	13	18	17	13	3.5	16	20.5	4	8.2

Tube Fitting Series SUS303 Type

New
SPD
SUS303

Branch Tee



Metric thread type

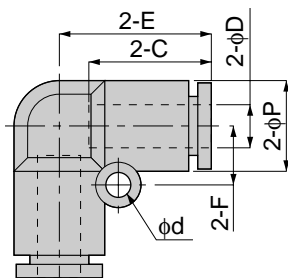


unit:mm

Model	Tube dia. ϕD	R	A	B	L	ϕP	C	E	H	Mass (g)	Orifice (ϕ mm)	Eff. a. (mm^2)		
SPD 4-M5	4	M5×0.8	3	20.5	35	10	15	17	10	11.5	1.8	1.9		
SPD 4-M6		M6×1	4	21.5						16				
SPD 4-01		R1/8	8	24.5	14.5									
SPD 4-02		R1/4	11	27.5	14				23.5					
SPD 6-M5	6	M5×0.8	3	23	40.5	13	17	20	12	15.5	1.8	1.9		
SPD 6-M6		M6×1	4	24						16			3	6.4
SPD 6-01		R1/8	8	26	42					17				
SPD 6-02		R1/4	11	29	43				14	26	4.6	12.5		
SPD 6-03		R3/8	12	31	44.5				17	38.5				
SPD 8-01		8	R1/8	8	28.5				46	15	18	22	14	22.5
SPD 8-02	R1/4		11	31.5	47	28.5								
SPD 8-03	R3/8		12	33	48.5	17	41							
SPD 10-01	10	R1/8	8	33	54.5	17.5	20	25.5	17	41	8	35		
SPD 10-02		R1/4	11	36	55.5					41.5				
SPD 10-03		R3/8	12	37	56					50.5				
SPD 10-04		R1/2	15	40	57.5				21	72				
SPD 12-02	12	R1/4	11	38	60	21	23.5	28	21	61	8	35		
SPD 12-03		R3/8	12	39	60.5					62.5			10	59
SPD 12-04		R1/2	15	42	62					77.5				
SPD 16-03	16	R3/8	12	47	74	25	24	33.5	22	89.5	11	79.5		
SPD 16-04		R1/2	15	51	74.5					99	13	92.8		

New
SPV
SUS303

Union Elbow

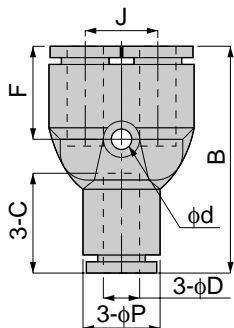


unit:mm

Model	Tube dia. ϕD	ϕP	C	E	ϕd	F	Mass (g)	Orifice (ϕ mm)	Eff. a. (mm^2)
SPV 4	4	10	15	17	-	-	5	2.8	4.2
SPV 6	6	12.5	17	20.5	3.2	8	7.5	5	10
SPV 8	8	15	18	22	4.2	10	10	7	16.5
SPV 10	10	17.5	20	26	4.2	12	17	9	30
SPV 12	12	21	23.5	29	4.2	14	24.5	11	47
SPV 16	16	25	24	33	4.2	12	30	13	91.6

New
SPY
SUS303

Union Y



unit:mm

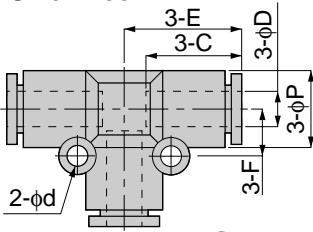
Model	Tube dia. ϕD	B	ϕP	C	J	ϕd	F	Mass (g)	Orifice (ϕ mm)	Eff. a. (mm^2)
SPY 4	4	33.5	10	15	11	3.2	14.5	8	3	4.2
SPY 6	6	38	13	17	12	3.2	16	10.5	4.6	10
SPY 8	8	43	15	18.5	14	3.2	17.5	15.5	6	16.5
SPY 10	10	49	18	20.5	18	4.5	20	25.5	7.5	27
SPY 12	12	55	21.5	23.5	20	4.5	22.5	37	9	38
SPY 16	16	63	25	24.5	24	4.5	22.5	44	13	56.5

Tube Fitting Series SUS303 Type

unit:mm

SPE SUS303

Union Tee

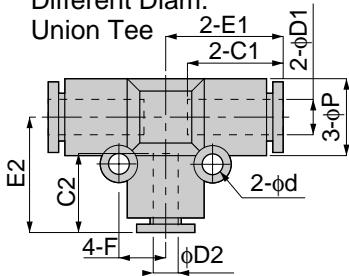


Model	Tube dia. ϕD	ϕP	C	E	ϕd	F	Mass (g)	Orifice (ϕmm)	Eff. a. (mm^2)
SPE 4	4	10	15	17	-	-	7	3	5.3
SPE 6	6	13	17	20	3.2	8	10.5	4.6	12.5
SPE 8	8	15	18	22	3.2	9	15.5	6	20
SPE 10	10	18	20	25.5	4.2	12	25.5	8	35
SPE 12	12	21.5	23.5	28	4.2	14	36	10	59
SPE 16	16	25.5	24	33	4.2	12	43.5	13	89.8

New

SPEG SUS303

Different Diam.
Union Tee

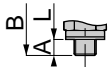
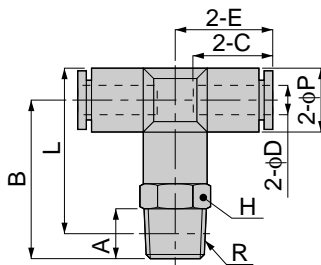


Model	Tube dia. $\phi D1$	Tube dia. $\phi D2$	ϕP	C1	C2	E1	E2	ϕd	F	Mass (g)	Orifice (ϕmm)	Eff. a. (mm^2)
SPEG 6-4	6	4	13	17	15	20.5	20	3.2	8	11	3	4.1
SPEG 8-6	8	6	15	18.5	18.5	22.5	20.5	3.2	9	15	5	10.3
SPEG 10-8	10	8	17.5	20.5	20.5	25.5	25	4.2	12	24	7	19.6
SPEG 12-10	12	10	21	23.5	23.5	29.5	29.5	4.2	14	35	9	32.5

unit:mm

SPB SUS303

Tee



Metric thread type

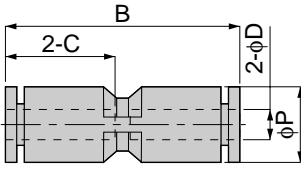


Model	Tube dia. ϕD	R	A	B	L	ϕP	C	E	H	Mass (g)	Orifice (ϕmm)	Eff. a. (mm^2)				
SPB 4-M5	4	M5×0.8	3	20.5	23	10	15	17	10	11.5	1.8	1.5				
SPB 4-M6		M6×1	4	21.5												
SPB 4-01		R1/8	8	23.5							24.5	14	24	3	4.1	
SPB 4-02		R1/4	11	26.5							26.5					
SPB 6-M5	6	M5×0.8	3	23	27	13	17	20.5	12	15.5	1.8	1.5				
SPB 6-M6		M6×1	4	24												
SPB 6-01		R1/8	8	26							28.5	14	25.5	4.6	10	
SPB 6-02		R1/4	11	29							29.5					
SPB 6-03	R3/8	12	31	31	17	38.5										
SPB 8-01	8	R1/8	8	26.5	30	15	18	22.5	14	22.5	6	16.5				
SPB 8-02		R1/4	11	29.5	31								17	41	8	30
SPB 8-03		R3/8	12	31.5	32.5											
SPB 10-01	10	R1/8	8	33	37.5	17.5	20	25.5	17	41	8	30				
SPB 10-02		R1/4	11	36	38.5											
SPB 10-03		R3/8	12	37	39								21	72.5	10	47
SPB 10-04		R1/2	15	40	40.5											
SPB 12-02	12	R1/4	11	38	42.5	21	23.5	28	21	61.5	8	30				
SPB 12-03		R3/8	12	39	43											
SPB 12-04		R1/2	15	42	44.5						77	10	47			
SPB 16-03	16	R3/8	12	47	53	25	25	33.5	22	95	11	80.1				
SPB 16-04		R1/2	15	51	55.5								99	13	90.8	

Tube Fitting Series SUS303 Type

SPU SUS303

Union Straight



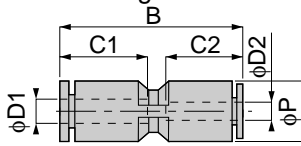
Model	Tube dia. ϕD	B	ϕP	C	Mass (g)	Orifice (ϕ mm)	Eff. a. (mm^2)
SPU 4	4	31	10	15	5	3.8	5.3
SPU 6	6	35	12.5	17	6.5	5.5	12.5
SPU 8	8	38	14.5	18	9.5	7	20
SPU 10	10	44	17.5	20	16	9	35
SPU 12	12	48	21	23.5	22	11	59
SPU 16	16	50	25	24.5	25	13	147.6

unit:mm

New

SPG SUS303

Different Diam. Union Straight



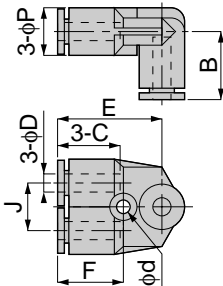
Model	Tube dia. $\phi D1$	Tube dia. $\phi D2$	B	ϕP	C1	C2	Mass (g)	Orifice (ϕ mm)	Eff. a. (mm^2)
SPG 6-4	6	4	34.5	12.5	17	15	6.5	3	5.3
SPG 8-6	8	6	38.5	14.5	18	17	9	5.5	12.5
SPG 10-8	10	8	44	17.5	20	18	14.5	7	20
SPG 12-10	12	10	53.5	21	23.5	20	22.5	9	35
SPG 16-12	16	12	49.5	25	24.5	23.5	26.5	10	88.6

unit:mm

New

SPAU SUS303

Union A



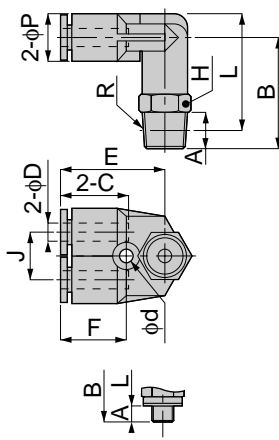
Model	Tube dia. ϕD	B	ϕP	C	J	E	ϕd	F	Mass (g)	Orifice (ϕ mm)	Eff. a. (mm^2)
SPAU 4	4	17	10	15	11	23	3.2	14.5	8	3	2.5
SPAU 6	6	20	12.5	17	12	26.5	4.2	15.5	11.5	4.6	7.2
SPAU 8	8	23	14.5	18	14	29.5	4.2	17	16.5	6	16.3
SPAU 10	10	25.5	18	20	18	34	4.2	19	27	8	27.9
SPAU 12	12	29.5	21.5	23.5	20	35.5	4.2	20.5	39	10	40

unit:mm

New

SPAX SUS303

Branch Elbow



Metric thread type



Model	Tube dia. ϕD	R	A	B	L	ϕP	C	J	E	H	ϕd	F	Mass (g)	Orifice (ϕ mm)	Eff. a. (mm^2)
SPAX 4-M5	4	M5×0.8	3	21.5	23.5	10	15	11	18	10	3.2	14.5	12.5	1.8	2.2
SPAX 4-M6		M6×1	4	22.5					20.5				12		17.5
SPAX 4-01		R1/8	8	24.5	25.5				23	14			15.5	3	2.7
SPAX 4-02		R1/4	11	27.5	26.5				24	24			24	2.5	
SPAX 6-M5	6	M5×0.8	3	25	28	12.5	17	12	20.5	12	4.2	15.5	17	1.8	2.2
SPAX 6-M6		M6×1	4	26					26.5				14		17.5
SPAX 6-01		R1/8	8	28	30				26.5	14			18.5	4.6	6.9
SPAX 6-02		R1/4	11	31	31				17	26.5			26.5	4.6	6.6
SPAX 6-03	R3/8	12	33	32.5	17	39.5	39.5	4.6	6.8						
SPAX 8-01	8	R1/8	8	31	34	14.5	18	14	29.5	14	4.2	17	25	6	14.6
SPAX 8-02		R1/4	11	34	35					17			30.5		14.5
SPAX 8-03		R3/8	12	36	36.5					17			44		15
SPAX 10-01	10	R1/8	8	34	39	18	20	18	34	17	4.2	19	44	8	15
SPAX 10-02		R1/4	11	37	40								21		45
SPAX 10-03		R3/8	12	38	40.5					75.5			75.5	27.2	
SPAX 10-04		R1/2	15	41	42					75.5			75.5	29.9	
SPAX 12-02	12	R1/4	11	41	45.5	21.5	23.5	20	35.5	21	4.2	20.5	66	10	38.2
SPAX 12-03		R3/8	12	42	46								67		43.1
SPAX 12-04		R1/2	15	45	47.5								83		83

unit:mm