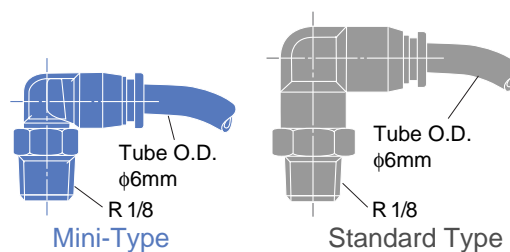


Ultra-small Quick-fitting Joint for Pneumatic Piping

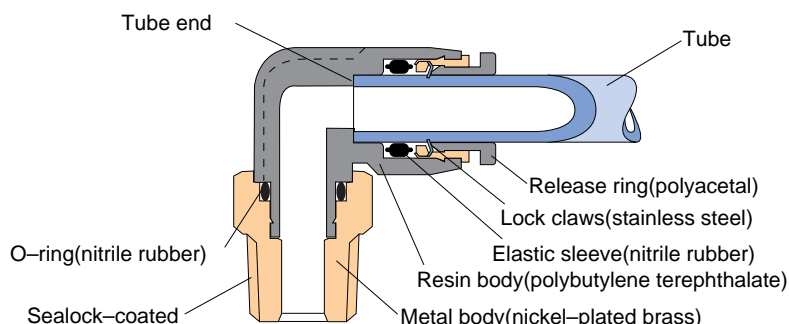
Tube Fitting Mini-Type

Features

- The ultra-small quick-fitting joint is used in pneumatic piping.
- This quick-fitting joint is 40% smaller than the standard type Tube Fitting.
- The elliptical, ultra-small release ring facilitates connecting and disconnecting the tube.



Construction



Specifications

Fluid admitted	Air	
Service pressure range	0~150 psi	0~0.9MPa
Working vacuum	-29.5 in.Hg	-100kPa
Service temperature range	32~140°F	0~60°C

Model Designation (Example)

PC 6 = 01 M U10

(1) Type
(2) Tube die.

Tube dia.	mm size			Inch size	
Code	3	4	6	5/32	1/8
Size	φ3	φ4	φ6	φ5/32	φ1/8

(3) Thread size

Code	Metric thread			Taper pipe thread		catridge type	
	Size	M3×0.5	M5×0.8	M6×1	R1/8	R1/4	M6×0.75
	Unfiled fine thread			American standard taper pipe thread			
Code	U10			N0		N1	
Size	10-32 UNF			NPT1/16		NPT 1/8	

(4) Mini-type (code: M)
Be sure to specify "M"; otherwise, the standard type will be delivered.

X, Y-dimensions of release ring.

Thread size	φ3	φ4 φ1/8	φ6
X	7mm	10mm	12mm
Y	6mm	8mm	10mm

*X=10mm and Y=8mm for some φ3 models.

(5) Hexagon flat-to-flat specification
U: Hexagon flat-to-flat inch spec. (NPT)
No code: Hexagon flat-to-flat mm spec.

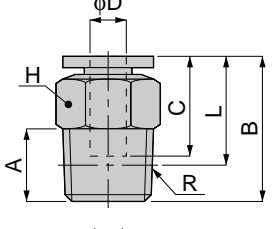
*When (3) is tube diameter, choose tube size from (2).

⚠ Detailed Safety Instructions

Before using the PISCO device, be sure to read the "Safety Instructions", "Common Safety Instructions for Products Listed in this Manual" on page 23~24 and "Common Safety Instructions for Quick-Fitting Joint" on pages 29~31.

PC
MINI TYPE

Straight



Metric thread type



unit:mm

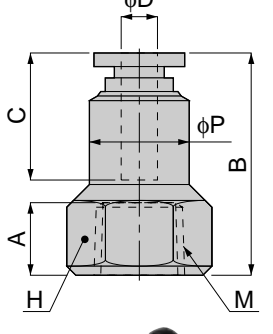
Model	Tube dia. φD	R	A	B	L	C	H	Mass (g)	Orifice (φmm)	Eff. a. (mm ²)
PC 3-M3M	3	M3×0.5	2.5	13	10.5	9.5	5.5	1	1.2	0.7
PC 3-M5M		M5×0.8	3	15.5	12.5	11	8	4	2	3
PC 3-M6M		M6×1	4	16.5						
PC 4-M3M	4	M3×0.5	2.5	15	12.5	11	8	2	1.2	0.9
PC 4-M5M		M5×0.8	3	16						
PC 4-M6M		M6×1	4	16.5						
PC 4-01M		R1/8	8	16						
PC 6-M5M	6	M5×0.8	3	17	14	11.5	10	5	2.4	3.6
PC 6-M6M		M6×1	4	18						
PC 6-01M		R1/8	8		14					
PC 1/8-M3M	1/8	M3×0.5	2.5	15	12.5	11	8	2	1.2	0.9
PC 1/8-M5M		M5×0.8	3	16						
PC 1/8-M6M		M6×1	4	16.5						
PC 1/8-01M		R1/8	8	16						

unit:inch

MODEL	Tube dia. φ D	NPT	A	B	L	C	H	Weight (g)	Orifice φ MM	Eff.a. mm ²	Cv
PC 1/8-U10MU	1/8	10-32UNF	0.14	0.63	0.49	0.43	5/16	3.1	2.4	2.6	0.14
PC 1/8-N0MU	1/8	1/16-27NPT	0.31	0.71	0.55	0.43	7/16	7.3	2.5	2.7	0.15
PC 1/8-N1MU	1/8	1/8-27NPT	0.31	0.63	0.47	0.43	7/16	7.4	2.5	2.7	0.15
PC 5/32-U10MU	5/32	10-32UNF	0.14	0.63	0.49	0.43	5/16	3.1	2.4	3.8	0.21
PC 5/32-N0MU	5/32	1/16-27NPT	0.31	0.71	0.55	0.43	7/16	7.2	2.5	6.4	0.35
PC 5/32-N1MU	5/32	1/8-27NPT	0.31	0.63	0.47	0.43	7/16	7.4	2.5	6.4	0.35

PCF
MINI TYPE

Female Straight



unit:mm

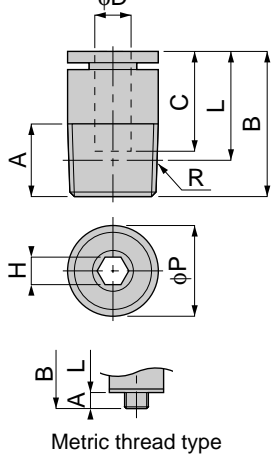
Model	Tube dia. φD	M	A	B	φP	C	H	Mass (g)	Orifice (φmm)	Eff. a. (mm ²)
PCF 3-M3M	3	M3×0.5	3	13	5.5	9.5	5.5	1.5	3	1.4
PCF 3-M5M		M5×0.8	5	15	8		8	4	2	2.8
PCF 4-M3M	4	M3×0.5	3	14	8	11	8	3	3	3.5
PCF 4-M5M		M5×0.8	5	17						
PCF 1/8-M3M	1/8	M3×0.5	3	14	8	11	8	3	3	3.5
PCF 1/8-M5M		M5×0.8	5	17						

unit:inch

MODEL	Tube dia. φ D	NPT	A	B	φ P	C	H	Weight (g)	Orifice φ MM	Eff.a. mm ²	Cv
PCF 1/8-U10MU	1/8	10-32UNF	0.14	0.69	0.31	0.43	5/16	4.3	2.0	2.6	0.14
PCF 5/32-U10MU	5/32	10-32UNF	0.14	0.69	0.31	0.43	5/16	4.1	2.0	2.6	0.14

POC
MINI TYPE

Hex. -Holed Straight



unit:mm

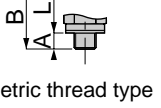
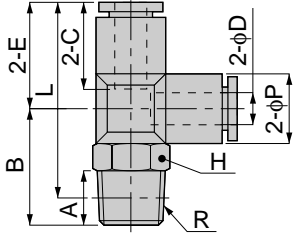
Model	Tube dia. φD	R	A	B	L	φP	C	H	Mass (g)	Orifice (φmm)	Eff. a. (mm ²)				
POC 3-M3M	3	M3×0.5	2.5	15.5	13	8	11	1.5	3	1.5	1.9				
POC 3-M5M		M5×0.8	3	15.5	12.5			2		2.2	2.8				
POC 4-M3M	4	M3×0.5	2.5	15.5	13.5	8	11	1.5	3	1.5	1.8				
POC 4-M5M		M5×0.8	3	16	13							2.5	4	2.6	5.1
POC 4-M6M		M6×1	4	16.5											
POC 4-01M		R1/8	8	15.5	11.5							10	11.5	6	3.1
POC 6-M5M	6	M5×0.8	3	17.5	14.5	10	11.5	2.5	5	2.6	5.2				
POC 6-M6M		M6×1	4	18	14			3		3.1	7.1				
POC 6-01M		R1/8	8	17.5	13.5			12		4	6	4.2	13		
POC 1/8-M3M	1/8	M3×0.5	2.5	15.5	13	8	11	1.5	3	1.5	1.8				
POC 1/8-M5M		M5×0.8	3	16	12.5			2.5		2.6	3.3				
POC 1/8-M6M		M6×1	4	16.5	13			3		3.1	3.1				

unit:inch

MODEL	Tube dia. φ D	NPT	A	B	L	φ P	C	H	Weight (g)	Orifice φ MM	Eff.a. mm ²	Cv
POC 1/8-U10MU	1/8	10-32UNF	0.14	0.63	0.49	0.31	0.43	3/32	3.1	2.5	3.2	0.17
POC 5/32-U10MU	5/32	10-32UNF	0.14	0.63	0.49	0.31	0.43	3/32	3.0	2.5	4.8	0.26
POC 5/32-N1MU	5/32	1/8	0.31	0.63	0.47	0.39	0.43	3/32	6.6	2.5	4.7	0.25

CAD **PD**
MINI TYPE

Branch Tee



Metric thread type



unit:mm

Model	Tube dia. φD	R	A	B	L	φP	C	E	H	Mass (g)	Orifice (φmm)	Eff. a. (mm ²)	
PD 3-M3M	3	M3×0.5	2.5	12	20.5	6.5	9.5	11	5.5	2	1.2	0.7	
PD 3-M5M		M5×0.8	3	13.5	21.5				8	4.5		2.2	
PD 3-M6M		M6×1	4	14.5	21.5				8	4.5		2	
PD 4-M3M	4	M3×0.5	2.5	15	26	8.5	11	13.5	8	4	1.2	0.9	
PD 4-M5M		M5×0.8	3	14.5	24.5					5	2.4	2.1	
PD 4-M6M		M6×1	4	15.5	24.5					5	2.5	2.2	
PD 4-01M		R1/8	8	17	26			10	7	3	4.5		
PD 6-M5M	6	M5×0.8	3	15.5	27.5	11	11.5	15	8	6	2.4	2.2	
PD 6-M6M		M6×1	4	16.5	27.5				10	8.5	3	2.5	3.3
PD 6-01M		R1/8	8	18	29				10	8.5	3	8.9	
PD 1/8-M3M	1/8	M3×0.5	2.5	15	26	8.5	11	13.5	8	4	1.2	0.9	
PD 1/8-M5M		M5×0.8	3	14.5	24.5					5	2.4	2.4	
PD 1/8-M6M		M6×1	4	15.5	24.5					5	2.5	2	
PD 1/8-01M		R1/8	8	17	26			10	7.5	3	2.5		

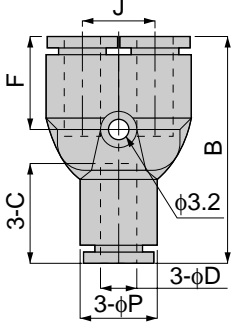


unit:inch

MODEL	Tube dia. φ D	NPT	A	B	L	φ P	C	E	H	Weight (g)	Orifice φ MM	Eff.a. mm ²	Cv
PD 1/8-U10MU	1/8	10-32UNF	0.14	0.57	0.43	0.31	0.43	0.51	5/16	4.3	2.4	2.4	0.13
PD 1/8-N1MU	1/8	1/8	0.31	0.67	0.51	0.31	0.43	0.51	7/16	8.1	2.5	2.5	0.14
PD 5/32-U10MU	5/32	10-32UNF	0.14	0.57	0.43	0.31	0.43	0.51	5/16	4.2	2.4	2.1	0.11
PD 5/32-N1MU	5/32	1/8	0.31	0.67	0.51	0.31	0.43	0.51	7/16	7.9	2.5	4.5	0.24

CAD **PY**
MINI TYPE

Union Y



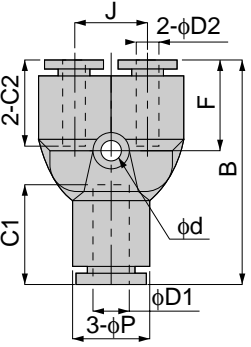
unit:mm

Model	Tube dia. φD	B	φP	C	J	F	Mass (g)	Orifice (φmm)	Eff. a. (mm ²)
PY 3M	3	28	8	9.5	8	13	3	2	2
PY 4M	4	27.5	8	11	8	12.5	3	2	2.3
PY 6M	6	31	10.5	11.5	10.5	14	5.5	3	6.8
PY 1/8M	1/8	27.5	8	11	8	12.5	3	2.5	1.1



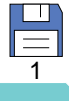
CAD **PW**
MINI TYPE

Different Dam. Union Y



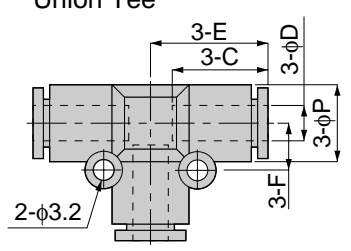
unit:mm

Model	Tube dia. φD1	Tube dia. φD2	B	φP	C1	C2	J	F	Mass (g)	Orifice (φmm)	Eff. a. (mm ²)
PW 4-3M	4	3	27.5	8	11	9.5	8	12.5	3	1.5	2.1
PW 4-1/8M		1/8				11				2.5	1.8
PW 6-3M	6	3	30.5	10.5	11.5	11	10.5	13.5	5.5	2.5	2.5
PW 6-4M		4							5	3	6.2
PW 6-1/8M		1/8							5	3	2.4
PW 1/8-3M	1/8	3	27.5	8	11	9.5	8	12.5	3	1.5	1.7



PE
MINI TYPE

Union Tee



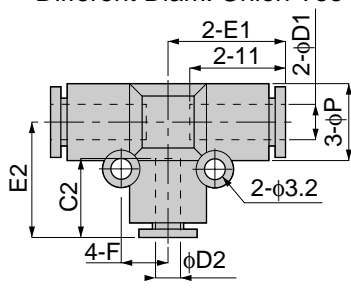
unit:mm

Model	Tube dia. φD	φP	C	E	F	Mass (g)	Orifice (φmm)	Eff. a. (mm ²)
PE 3M	3	6	9.5	11	4.5	2	2	1.9
PE 4M	4	8	11	13	5.5	2	3	4.6
PE 6M	6	10.5	11.5	15	6.5	4	4	8.9
PE 1/8M	1/8	8	11	13	5.5	2	3	2.1



PEG
MINI TYPE

Different Diam. Union Tee



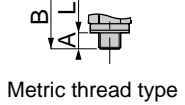
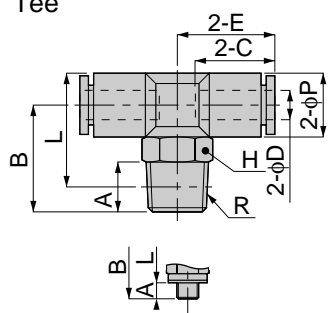
unit:mm

Model	Tube dia. φD1	Tube dia. φD2	φP	C	E1	E2	F	Mass (g)	Orifice (φmm)	Eff. a. (mm ²)
PEG 4-3M	4	3	8	11	13	13	5.5	3.5	2.5	2.4
PEG 4-1/8M		1/8								2.3
PEG 6-4M	6	4	10.5	11.5	15	14.5	6.5	4	3	5.3



PB
MINI TYPE

Tee



Metric thread type



unit:mm

Model	Tube dia. φD	R	A	B	L	φP	C	E	H	Mass (g)	Orifice (φmm)	Eff. a. (mm ²)		
PB 3-M3M	3	M3×0.5	2.5	12	15.5	6.5	9.5	11	5.5	2	1.2	0.7		
PB 3-M5M		M5×0.8	3	13.5	13.5				8			3.5	2	
PB 3-M6M		M6×1	4	14.5					5			1.9		
PB 4-M3M	4	M3×0.5	2.5	15	16.5	8.5	11	12.5	8	4	1.2	1.4		
PB 4-M5M		M5×0.8	3	14.5	15.5							4.5	2.4	3.7
PB 4-M6M		M6×1	4	15.5								5	2.5	2.8
PB 4-01M		R1/8	8	17	17							7	3	4.6
PB 6-M5M	6	M5×0.8	3	15.5	18	11	11.5	13	8	6	2.5	3.5		
PB 6-M6M		M6×1	4	16.5								3.6		
PB 6-01M		R1/8	8	18								19.5	14	10
PB 1/8-M3M	1/8	M3×0.5	2.5	15	16.5	8.5	11	12.5	8	4	1.2	0.9		
PB 1/8-M5M		M5×0.8	3	15.5	15.5							4.5	2.4	2.1
PB 1/8-M6M		M6×1	4	16.5								5	2.5	2.2
PB 1/8-01M		R1/8	8	17	17							7	3	2.3

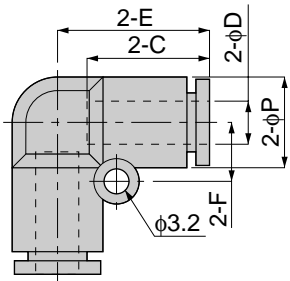
unit:inch

MODEL	Tube dia. φ D	NPT	A	B	L	φ P	C	E	H	Weight (g)	Orifice φ MM	Eff.a. mm ²	Cv
PB 1/8-U10MU	1/8	10-32UNF	0.14	0.57	0.43	0.31	0.43	0.53	5/16	4.3	2.4	2.1	0.11
PB 1/8-N1MU	1/8	1/8	0.31	0.67	0.51	0.31	0.43	0.53	7/16	8.1	2.5	2.3	0.12
PB 5/32-U10MU	5/32	10-32UNF	0.14	0.57	0.43	0.31	0.43	0.53	5/16	4.2	2.4	3.7	0.20
PB 5/32-N1MU	5/32	1/8	0.31	0.67	0.51	0.31	0.43	0.53	7/16	7.9	2.5	4.6	0.25

Tube Fitting Series Mini-type

unit:mm

PV
MINI TYPE
Union Elbow

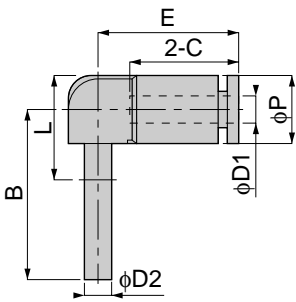


Model	Tube dia. φD	φP	C	E	F	Mass (g)	Orifice (φmm)	Eff. a. (mm ²)
PV 3M	3	6	9.5	11	4.5	1.5	2	2.3
PV 4M	4	8	11	13	5.5	2	3	4.8
PV 6M	6	10.5	11.5	15	6.5	4	4	9
PV 1/8M	1/8	8	11	13	5.5	2	3	2.1



unit:mm

PLJ
MINI TYPE
Socket Elbow

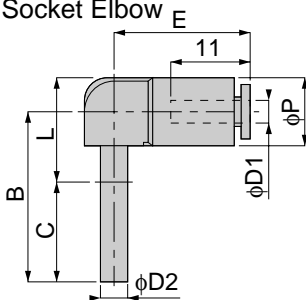


Model	Tube dia. φD1	φD2	B	L	φP	C	E	Mass (g)	Orifice (φmm)	Eff. a. (mm ²)
PLJ 3M	3	3	21	15	7	9.5	13	1	1.5	1.2
PLJ 4M	4	4	25	18	8	11	15	2	2.5	3.2
PLJ 6M	6	6	29.5	23	10.5	11.5	16.5	3	3	5.1



unit:mm

PLGJ
MINI TYPE
Different Diam. Socket Elbow

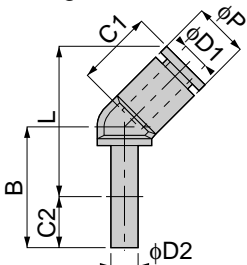


Model	Tube dia. φD1	φD2	B	L	φP	C	E	Mass (g)	Orifice (φmm)	Eff. a. (mm ²)
PLGJ 4-3M	3	4	25	18	8.5	11	15	2	2.5	2.3
PLGJ 4-1/8M	1/8									2.4
PLGJ 6-3M	3	6	29.5	23	10.5	11.5	16	3	2.5	2.4
PLGJ 6-4M	4								3	4.2
PLGJ 6-1/8M	1/8								3	4.2



unit:mm

PLHJ
MINI TYPE
45-degree Socket Elbow

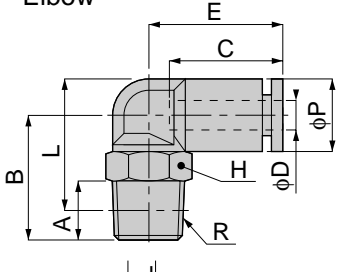


Model	Tube dia. φD1	φD2	B	L	φP	C1	C2	Mass (g)	Orifice (φmm)	Eff. a. (mm ²)
PLHJ 4M	4	4	25.5	26.5	8	11	11	2	2.5	3.2
PLHJ 6M	6	6	29	31.5	10.5	11.5	11.5	3	4	5.1



PL
MINI TYPE

Elbow



Metric thread type



unit:mm

Model	Tube dia. φD	R	A	B	L	φP	C	E	H	Mass (g)	Orifice (φmm)	Eff. a. (mm ²)	
PL 3-M3M	3	M3×0.5	2.5	12	12.5	6.5	9.5	11	5.5	1.5	1.2	0.5	
PL 3-M5M		M5×0.8	3	13.5	13.5				8	3		0.9	
PL 3-M6M		M6×1	4	14.5	13.5				8	3		0.9	
PL 4-M3M	4	M3×0.5	2.5	14	15.5	8.5	11	15	8	3	1.3	1.3	
PL 4-M5M		M5×0.8	3	13.5	14.5						2.4	2.2	
PL 4-M6M		M6×1	4	14.5	14.5						4	2.5	3.9
PL 4-01M		R1/8	8	16	16						15.5	10	6
PL 6-M5M	6	M5×0.8	3	14.5	17	11	11.5	16	8	4	2.4	3.5	
PL 6-M6M		M6×1	4	15.5	17						2.5	3.6	
PL 6-01M		R1/8	8	17	18.5						10	7	4
PL 1/8-M3M	1/8	M3×0.5	2.5	14	15.5	8.5	11	15	8	3	1.3	0.9	
PL 1/8-M5M		M5×0.8	3	13.5	14.5						2.4	2.7	
PL 1/8-M6M		M6×1	4	14.5	14.5						4	2.5	2.5
PL 1/8-01M		R1/8	8	16	16						15.5	10	6

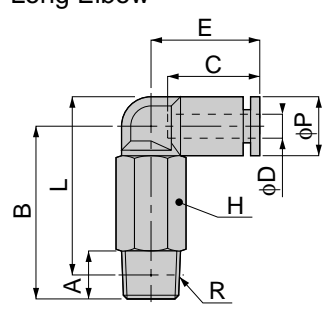


unit:inch

MODEL	Tube dia. φ D	NPT	A	B	L	φ P	C	E	H	Weight (g)	Orifice φ MM	Eff.a. mm ²	Cv
PL 1/8-U10MU	1/8	10-32UNF	0.14	0.53	0.39	0.31	0.43	0.61	5/16	3.3	2.4	2.7	0.15
PL 1/8-N0MU	1/8	1/16-27	0.31	0.73	0.57	0.31	0.43	0.63	7/16	7.5	2.5	2.0	0.11
PL 1/8-N1MU	1/8	1/8	0.31	0.63	0.47	0.31	0.43	0.63	7/16	7.1	2.5	2.0	0.11
PL 5/32-U10MU	5/32	10-32UNF	0.14	0.53	0.39	0.31	0.43	0.61	5/16	3.3	2.4	2.2	0.12
PL 5/32-N0MU	5/32	1/16-27	0.31	0.73	0.57	0.31	0.43	0.63	7/16	7.5	2.5	4.8	0.26
PL 5/32-N1MU	5/32	1/8	0.31	0.63	0.47	0.31	0.43	0.63	7/16	7.1	2.5	4.8	0.26

PLL
MINI TYPE

Long Elbow



Metric thread type



unit:mm

Model	Tube dia. φD	R	A	B	L	φP	C	E	H	Mass (g)	Orifice (φmm)	Eff. a. (mm ²)
PLL 3-M3M	3	M3×0.5	2.5	19	19.5	6	9.5	11	5.5	2.5	1.2	0.6
PLL 4-M3M	4	M3×0.5	2.5	23	24.5	8.5	11	15	8	7	1.2	0.9
PLL 4-M5M		M5×0.8	3	25	26					8.5	2.4	3
PLL 4-M6M		M6×1	4	26	26					8.5	2.5	3.7
PLL 4-01M		R1/8	8	28.5	26					10	13	4
PLL 6-M5M	6	M5×0.8	3	26	28.5	11	11.5	16	8	9	2.4	3.3
PLL 6-M6M		M6×1	4	27	28.5						2.5	3.7
PLL 6-01M		R1/8	8	29.5	31						10	14
PLL 1/8-M3M	1/8	M3×0.5	2.5	23	24.5	8.5	11	15	8	7	1.2	0.9
PLL 1/8-M5M		M5×0.8	3	25	26						8.5	2.4

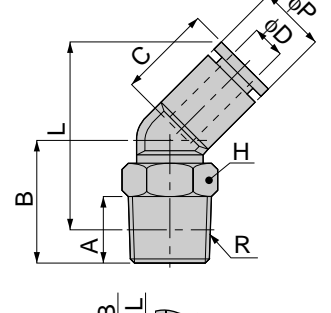


unit:inch

MODEL	Tube dia. φ D	NPT	A	B	L	φ P	C	E	H	Weight (g)	Orifice φ MM	Eff.a. mm ²	Cv
PLL 1/8-U10MU	1/8	10-32UNF	0.14	0.98	0.85	0.31	0.43	0.61	5/16	8.0	2.4	2.5	0.14
PLL 1/8-N1MU	1/8	1/8	0.31	1.12	0.96	0.31	0.43	0.61	7/16	15.9	2.5	4.2	0.23
PLL 5/32-U10MU	5/32	10-32UNF	0.14	0.98	0.85	0.31	0.43	0.61	5/16	8.0	2.5	3.0	0.16
PLL 5/32-N1MU	5/32	1/8	0.31	1.12	0.96	0.31	0.43	0.61	7/16	15.8	2.5	4.2	0.23

PLH
MINI TYPE

45-degree Elbow



Metric thread type

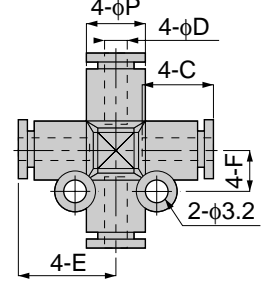


unit:mm

Model	Tube dia. φD	R	A	B	L	φP	C	H	Mass (g)	Orifice (φmm)	Eff. a. (mm ²)
PLH 4-M5M	4	M5×0.8	3	12.5	21.5	8	11	8	3	2.4	2.9
PLH 4-M6M		M6×1	4	13.5					3.5	2.5	4
PLH 4-01M		R1/8	8	15					23	10	6
PLH 6-M5M	6	M5×0.8	3	14	24	10.5	11.5	8	4	2.4	3.6
PLH 6-M6M		M6×1	4	15					2.5	3.8	
PLH 6-01M		R1/8	8	16.5					25.5	10	6.5

PZA
MINI TYPE

Cross A



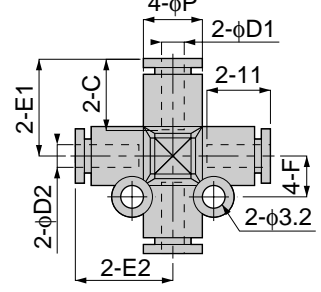
unit:mm

Model	Tube dia. φD	φP	C	E	F	Mass (g)	Orifice (φmm)	Eff. a. (mm ²)
PZA 3M	3	8	11	13	5.5	4	2	2.2
PZA 4M	4	8	11	13.5	5.5	4	3	4.8
PZA 6M	6	10.5	11.5	15	6.5	5	4	8.8
PZA 1/8M	1/8	8	11	13	5.5	4	3	4.8



PZB
MINI TYPE

Cross B



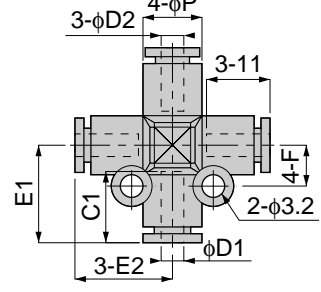
unit:mm

Model	Tube dia. φD1	Tube dia. φD2	φP	C	E1	E2	F	Mass (g)	Orifice (φmm)	Eff. a. (mm ²)
PZB 4-3M	4	3	8	11	13	13	5.5	4	2	2.2
PZB 4-1/8M		1/8							3	4.8
PZB 6-4M	6	4	10.5	11.5	15	14.5	6.5	6.5	3	5.3
PZB 6-1/8M		1/8								
PZB 1/8-3M	1/8	3	8	11	13	13	5.5	4.5	2	2.2



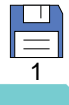
PZC
MINI TYPE

Cross C



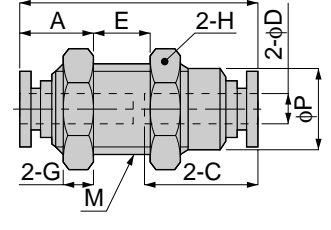
unit:mm

Model	Tube dia. φD1	Tube dia. φD2	φP	C	E1	E2	F	Mass (g)	Orifice (φmm)	Eff. a. (mm ²)
PZC 4-3M	4	3	8	11	13	13	5.5	4	2	2.2
PZC 4-1/8M		1/8						4.5	3	2.4
PZC 6-4M	6	4	10.5	11.5	15	14.5	6.5	6.5	3	4.9
PZC 6-1/8M		1/8								2.4
PZC 1/8-3M	1/8	3	8	11	13	13	5.5	4.5	2	1.9



PM
MINI TYPE

Bulkhead Union



unit:mm

Model	Tube dia. φD	M	B	φP	C	E1	E2	H	G	Mass (g)	Orifice (φmm)	Eff. a. (mm ²)
PM 3M	3	M8×0.75	19	7	9.5	7	7.5	10	2	3	2	2.4
PM 4M	4	M10×1	23	9	11	9	7.5	12	3	6	3	3.7
PM 6M	6	M12×1	24.5	11	11.5	10.5	6	14	4	9	4	10.5

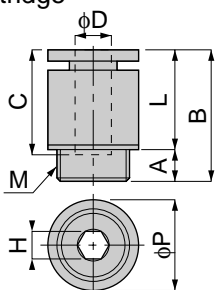


unit:inch

MODEL	Tube dia. φ D	UNF	B	φ P	C	E1	E2	H	Weight (g)	Orifice φ MM	Eff.a. mm ²	Cv
PM 1/8MU	1/8	7/16-20	0.91	0.35	0.43	0.35	0.30	1/2	6.6	3.0	3.7	0.20
PM 5/32MU	5/32	7/16-20	0.91	0.35	0.43	0.35	0.30	1/2	6.5	3.0	3.7	0.20



Cartridge



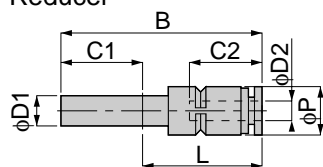
Model	Tube dia. ϕD	M	A	B	L	ϕP	C	H	Mass (g)	Orifice (ϕ mm)	Eff. a. (mm^2)
PCC 3-M6M	3	M6×0.75	3	14	11	8	11	2	3	2.2	2.9
PCC 4-M6M	4	M6×0.75	3	14	11	8	11	2.5	3	2.6	5.1
PCC 4-M8M		M8×0.75	3.5		10.5	10		3		3.1	7.3
PCC 6-M8M	6	M8×0.75	3.5	14.5	11	10	11.5	4	4	4.2	12.8
PCC 1/8-M6M	1/8	M6×0.75	3	14	11	8	11	2	3	2.6	3



1



Reducer



Model	$\phi D1$	Tube dia. $\phi D2$	B	L	ϕP	C1	C2	Mass (g)	Orifice (ϕ mm)	Eff. a. (mm^2)
PGJ 4-3M	4	3	33.5	22.5	8	11	9.5	1.5	2.5	3.7
PGJ 6-3M	6	3	38	26.5	9.5	11.5	11	2.5	3	3.1
PGJ 6-4M		4						3.5		5.4
PGJ 6-1/8M		1/8						2.5	2.5	



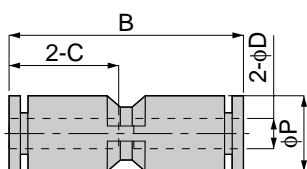
1



1



Union Straight



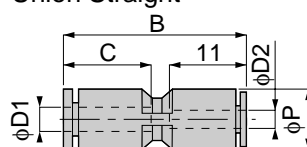
Model	Tube dia. ϕD	B	ϕP	C	Mass (g)	Orifice (ϕ mm)	Eff. a. (mm^2)
PU 3M	3	19.5	6	9.5	1.5	2	2.7
PU 4M	4	22.5	8	11	2	3	5.4
PU 6M	6	24.5	10.5	11.5	4	4	11
PU 1/8M	1/8	22.5	8	11	2	3	2.6



1



Different Diam. Union Straight



Model	Tube dia. $\phi D1$	Tube dia. $\phi D2$	B	ϕP	C	Mass (g)	Orifice (ϕ mm)	Eff. a. (mm^2)
PG 4-3M	4	3	22.5	8	11	3	2	2.4
PG 4-1/8M		1/8					2.5	
PG 6-4M	6	4	24	10.5	11.5	4	3	5.6
PG 6-1/8M		1/8				3		2.6



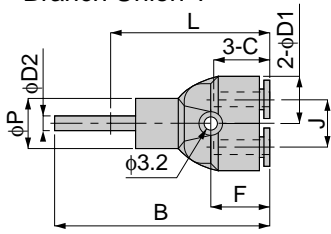
1



1

PYJ
MINI TYPE

Branch Union Y



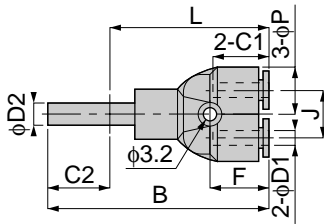
unit:mm

Model	Tube dia. $\phi D1$	$\phi D2$	B	L	ϕP	C	J	F	Mass (g)	Orifice (ϕ mm)	Eff. a. (mm^2)
PYJ 3M	3	3	43.5	34	8	9.5	8	13	3	1.5	0.8
PYJ 4M	4	4	45	34	8	11	8	12.5	3.5	2	2.2
PYJ 6M	6	6	50.5	39	10.5	11.5	10.5	14	5.5	3	5.6



PWJ
MINI TYPE

Different Dam.
Branch Union Y



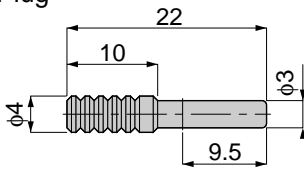
unit:mm

Model	Tube dia. $\phi D1$	$\phi D2$	B	L	ϕP	C1	C2	J	F	Mass (g)	Orifice (ϕ mm)	Eff. a. (mm^2)
PWJ 4-3M	3	4	44	33	8	9.5	11	8	12.5	3	2.5	2.6
PWJ 4-1/8M	1/8					11						1.7
PWJ 6-3M	3	6	50	38.5	10.5	11	11.5	10.5	13.5	5	3	2.5
PWJ 6-4M	4											4.5
PWJ 6-1/8M	1/8											5.3



PP
MINI TYPE

Plug



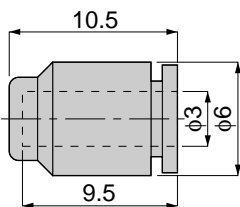
unit:mm

Model	Mass (g)
PP 3M	0.5



PPF
MINI TYPE

Cap



unit:mm

Model	Mass (g)
PPF 3M	0.5

